

SECTION 31
Welding

| | | | |
|---------------------------------------|-------------------------|--|--|
| AIR ACETYLENE | | | |
| Kits | 31-7 | | |
| Tips | 31-7 | | |
| ARC | | | |
| Welding Supplies | 31-11 | | |
| ARRESTORS, GAS FLASHBACK | 31-8 | | |
| BLANKET | | | |
| Welding | 31-1 | | |
| BRAZING | | | |
| Alloys | 31-8-9 | | |
| Flux | 31-11 | | |
| Goggles | 31-11 | | |
| Mapp/Propane Kits | 31-2-4 | | |
| Outfits | 31-6, 31-9-10 | | |
| Rods | 31-4 | | |
| Tips | 31-6-7 | | |
| Torches | 31-2-3 | | |
| BRINELL HARDNESS TESTER | 31-5 | | |
| BRUSHES | | | |
| Flux | 31-5 | | |
| Soldering | 31-5 | | |
| BUTANE | | | |
| Cylinders | 31-4 | | |
| CHECK | | | |
| Valves | 31-8 | | |
| CLEANER | | | |
| Welding Tip | 31-8 | | |
| CYLINDER | | | |
| Butane | 31-4 | | |
| Mapp | 31-4 | | |
| Oxygen | 31-4 | | |
| Propane | 31-4 | | |
| Regulators | 31-8, 31-10-11 | | |
| Wrenches | 31-11 | | |
| ELECTRODES | | | |
| Alloy Repair | 31-1 | | |
| Chamfering | 31-1 | | |
| Gouging | 31-11 | | |
| Welding | 31-11 | | |
| FLASHBACK | | | |
| Arrestors | 31-8 | | |
| FLINT, GAS LIGHTER | 31-4, 31-11 | | |
| FLUX | | | |
| Brazing | 31-11 | | |
| Brushes | 31-5 | | |
| Soldering | 31-5 | | |
| Water Soluble | 31-5 | | |
| GLOVES | | | |
| Heat Resistant | 31-2 | | |
| Welders | 31-2 | | |
| GOGGLES | | | |
| Welding | 31-11 | | |
| HARDNESS TESTER, BRINELL | 31-5 | | |
| HEAT | | | |
| Shield, Soldering | 31-4-5 | | |
| HOSE | | | |
| Welding | 31-11 | | |
| IGNITERS, TORCHES | 31-2-4 | | |
| LIGHTERS | | | |
| Flint | 31-4, 31-11 | | |
| Spark | 31-4, 31-11 | | |
| MAPP GAS | | | |
| Brazing/Welding Tips | 31-16 | | |
| Cylinders | 31-4 | | |
| Torches | 31-2-3 | | |
| MIG | | | |
| Welding Gloves | 31-2 | | |
| Wire | 31-12 | | |
| MITTENS | | | |
| Heat Resistant | 31-2 | | |
| Welders | 31-2 | | |
| OXYACETYLENE | | | |
| Brazing/Welding Tips | 31-6, 31-10 | | |
| Welding Kits | 31-6, 31-9-10 | | |
| OXYGEN | | | |
| Cylinders | 31-4 | | |
| PROPANE | | | |
| Cylinders | 31-4 | | |
| Solder/Brazing Kit | 31-2-3 | | |
| Torches | 31-2-4 | | |
| REGULATORS | | | |
| Welding Gas | 31-8, 31-10-11 | | |
| ROD | | | |
| Brazing | 31-4 | | |
| Soldering | 31-4 | | |
| Tig | 31-12 | | |
| Welding | 31-4, 31-12 | | |
| ROSEBUD | | | |
| Heating Tips | 31-7 | | |
| SOLDER | | | |
| Acid Core (General Purpose) | 31-5, 31-9 | | |
| Brushes | 31-5 | | |
| Flux | 31-5 | | |
| Fuel Cylinders | 31-4 | | |
| Heat Shield | 31-5 | | |
| HVAC/Plumbers Kit | 31-7 | | |
| Kits | 31-2-4, 31-7 | | |
| Plumber's Kits | 31-7 | | |
| Rod | 31-4 | | |
| Rosin Core (Electrical) | 31-5 | | |
| Solid Core (Plumbing) | 31-4 | | |
| Tips | 31-7 | | |
| Torches | 31-2-4, 31-7 | | |
| Torches Accessories | 31-2-5 | | |
| Twister Kits/Tips | 31-7 | | |
| Wire | 31-4-5, 31-9 | | |
| SPARK | | | |
| Lighters | 31-4, 31-11 | | |
| TESTER, BRINELL HARDNESS | 31-5 | | |
| TIG | | | |
| Welders Gloves | 31-2 | | |
| Welding Rod | 31-12 | | |
| TIP | | | |
| Air/Acetylene | 31-7 | | |
| Brazing | 31-6-7 | | |
| Cleaner, Welder | 31-8 | | |
| Cutting | 31-7 | | |
| Heating | 31-7, 31-10 | | |
| Soldering | 31-7 | | |
| Welding | 31-6-7 | | |
| TORCHES | | | |
| Air/Acetylene | 31-7 | | |
| Brass | 31-3-4 | | |
| Brazing | 31-2, 31-3 | | |
| Check Valves | 31-8 | | |
| Cleaners, Welding | 31-8 | | |
| Cutting Attachments | 31-6, 31-10 | | |
| Cutting Handle | 31-6, 31-10 | | |
| Cutting Tips | 31-7 | | |
| Cylinders | 31-4 | | |
| Flashback Arrestors | 31-8 | | |
| Flint Lighters | 31-4, 31-11 | | |
| Handles | 31-6, 31-10 | | |
| Heating Tips | 31-7, 31-10 | | |
| High Temperatures | 31-3 | | |
| Instant Igniters | 31-2 | | |
| Kits | 31-2-4, 31-6-7, 31-9-10 | | |
| Mapp | 31-2-4 | | |
| Oxyacetylene | 31-6 | | |
| Oxygen Mapp | 31-2 | | |
| Propane | 31-2-4 | | |
| Soldering | 31-2-4, 31-7 | | |
| Spark Lighters | 31-4, 31-11 | | |
| Tip Cleaners | 31-8 | | |
| Tips | 31-6, 31-10 | | |
| Utility | 31-4 | | |
| Welding | 31-2, 31-6, 31-9-10 | | |
| Welding and Cutting Kit | 31-2 | | |
| Wrenches | 31-11 | | |
| VALVES | | | |
| Backflow Prevention | 31-8 | | |
| Check | 31-8 | | |
| WELDING | | | |
| Arc, Electrodes | 31-11 | | |
| Blankets | 31-1 | | |
| Check Valves | 31-8 | | |
| Curtains | 31-1 | | |
| Cutting and Welding Outfit | 31-9-10 | | |
| Cutting Attachments | 31-6, 31-10 | | |
| Cutting Tips | 31-7 | | |
| Electrodes | 31-11 | | |
| Gas Lighter | 31-2, 31-4, 31-11 | | |
| Gas Regulator | 31-8, 31-10-11 | | |
| Gloves | 31-2 | | |
| Goggles | 31-11 | | |
| Heating Tips | 31-7, 31-10 | | |
| Hose | 31-11 | | |
| Kits | 31-2, 31-6, 31-9-10 | | |
| Mig Wire | 31-12 | | |
| Outfits | 31-6, 31-9-10 | | |
| Oxyacetylene Kits | 31-6 | | |
| Oxygen/Mapp | 31-2 | | |
| Rod | 31-4, 31-12 | | |
| Tank Regulators | 31-8, 31-10-11 | | |
| Tank Wrenches | 31-11 | | |
| Tig Rod | 31-12 | | |
| Tip Cleaners | 31-8 | | |
| Torch Check Valve | 31-8 | | |
| Torch Flashback Arrestor | 31-8 | | |
| Torch Instant igniter | 31-2 | | |
| Torch Tips | 31-6-7, 31-10 | | |
| Torches | 31-2, 31-6-9, 31-9-10 | | |
| Wire, Mig | 31-12 | | |
| WIRE | | | |
| Mig | 31-12 | | |
| Soldering | 31-4-5, 31-9 | | |
| WRENCHES | | | |
| Welding Tank | 31-11 | | |

AMI

AMI

AMI-GLAS®

The workhorse of asbestos substitutes... without the hazards

Woven from 100% fiberglass yarns, AMI-GLAS fabrics offer excellent protection against vertical spark & slag used as dropcloths & heat containment curtains in light- to medium-duty welding applications.

- Continuous protection to 1000°F
- 100% woven texturized fiberglass
- Melting point: 1400° F
- Durable – ideal for applications where fabric must be moved frequently
- Strong & versatile
- Abrasion resistant
- Low irritation factor
- Flexible
- Resistant to chemicals
- Available dyed & fabricated to your specs

Colors: Red, Black, Orange, White, Gold, Tan, Blue



| Product Code | Width (in) | Thickness (in) | Weight (oz/sq yd) | Standard Put-Ups | Finish/Treatment |
|---------------|------------|----------------|-------------------|-----------------------|---|
| GL1100 | 38, 60 | .015 | 11 | 50 yd rolls, | • 9383 finish (caramelization) |
| GL or CGL1200 | 40, 60, 72 | .025 | 12 | 25 yd rolls | |
| GL 1300 | 60 | .017 | 13 | or as | • GEW or GEA coating for fabrication purposes |
| GL1400 | 60 | .020 | 14 | specified by customer | |
| GL or CGL2025 | 40, 60, 72 | .030 | 18 | | |
| GL or CGL2400 | 40, 60, 72 | .050 | 24 | | |
| GL2618 | 38, 60 | .055 | 26 | | |
| GLTW2600 | 40, 60, 72 | .055 | 26 | | |
| GL or CGL3000 | 40, 60, 72 | .060 | 30 | | |
| GL or CGL3200 | 40, 60, 72 | .070 | 32 | | |
| GL or CGL3500 | 40, 60, 72 | .080 | 35 | | |
| GL or CGL4000 | 40, 60, 72 | .090 | 40 | | |
| GL or CGL6000 | 40, 60 | .125 | 60 | | |

Note: GL fabrics are premium grade, CGL fabrics are commercial grade (not recommended for fabrication)

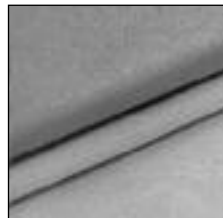
GOLDENGLAS®

Choose neoprene-coated GOLDENGLAS for extra durability.

Woven from 100% fiberglass yarns, GOLDENGLAS fabrics offer excellent protection against vertical spark & slag as dropcloths & heat containment curtains in light- to medium-duty welding applications.

- 100% woven textured fiberglass fabric with neoprene coating
- Fabric remains stable to 1000°F; neoprene is limited to 225°F continuous.
- Made tough to last long in high traffic areas or where fabric must be moved frequently

Colors: Gold, Blue (other colors available upon request)



| Product Code | Width (in) | Thickness (in) | Weight (oz/sq yd) | Standard Put-Ups |
|--------------|------------|----------------|-------------------|-----------------------------|
| GLN2025 | 40, 60, 72 | .030 | 20 | 50 yd rolls, 25 yd rolls or |
| GLN2401 | 40, 60, 72 | .050 | 26 | as specified by customer |

AMI-FAB®

The flexible choice for rugged performance.

Fabricated as curtains, or as a drop cloth over equipment, AMI-FAB offers good vertical spark protection in situations requiring flexibility and durable performance. It has excellent drapability and is well suited to outdoor operations.

- 100% fiberglass cloth coated both sides with silicone rubber
- Ideal as drop cloths over equipment and floors
- Good vertical spark protection when used as curtain
- Rugged, long-wearing performance
- Water and weather resistant
- Fiberglass remains stable to 1000°F, silicone is limited to 500°F continuous

Colors: Grey, Salmon, Blue, Red, White, Black



| Product Code | Width (in) | Thkns (in) | Wt. (oz/sq yd) | Standard Put-Ups |
|--------------|------------|------------|----------------|--|
| SGL900 | 50" | .008 | 9 | 50 yd rolls, |
| SGL1400 | 38", 60" | .013 | 14 | 25 yd rolls, or |
| SGL1700 | 60" | .016 | 17 | as specified by |
| SGL2000 | 38" | .022 | 20 | customer |
| SGL3200 | 37", 60" | .032 | 32 | |
| SGL5300 | 40", 60" | .060 | 53 | |
| SGL9000 | 40", 60" | .125 | 90 | CSSL9000 60" available in 25 yd rolls max) |

AMI-SIL®

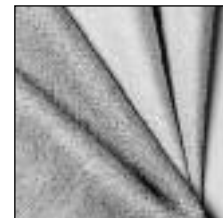
The ultimate in high temperature welding protection!

With a melting point of over 3000°F, AMI-SIL fabrics – made of 96% pure silica – offer welders mega-protection in applications from heat treating to stress relieving to drop cloths over equipment and floors.

- Continuous protection to 1800°F
- Melting point: 3000°F
- Made of essentially pure silica (min. 96% silica content)
- Military grade woven with non-texturized yarn, commercial grade woven with texturized yarn
- Excellent slag protection, even when used horizontally
- Compliance to MIL-C-24576 for construction, weight and content



Plain & aluminized military grade AMI-SIL



Commercial grade AMI-SIL

| | Product Code | Width (in) | Thkns (in) | Wt. (oz/sq yd) | Finish/Treatment |
|------------------|--------------|------------|------------|----------------|---|
| Military Grade | AS1800 | 36 | .030 | 18 | • AR finish: added abrasion resistance • Silicone coating • Aluminization • Pressure sensitive • Pre-shrunk |
| | AS1800AR | 36 | .030 | 18 | |
| | AS2400 | 36 | .040 | 24 | |
| | AS2400AR | 36 | .040 | 24 | |
| | AS3600 | 36 | .054 | 36 | |
| Commercial Grade | CAS1700 | 39 | .035 | 17 | |
| | CAS4000 | 39 | .090 | 40 | |

Note: Military grade woven with non-textured yarn, commercial grade woven with textured yarn.

Blanket & Curtain Fabrication

AMI can fabricate any of its high temperature fabrics into welding blankets or curtains per your order. Whether you specify standard or custom sizes, with or without grommets or other special hardware, our fully integrated capabilities assure you of fast turnaround and maximized quality control.

| Standard Blanket & Curtain Sizes (ft): | | | |
|--|-------|--------|---------|
| 3 x 4 | 5 x 5 | 6 x 8 | 8 x 10 |
| 4 x 5 | 5 x 6 | 6 x 10 | 10 x 10 |
| 4 x 6 | 6 x 6 | 8 x 8 | 12 x 12 |

Custom sizes and styles available on request

Welding

AMI/Bernz-O-Matic®

AMI-GUARD®

High performance hand protection with the AMI difference!

- Full range of standard glove, mitten and cuff styles
- Products made of AMI-GLAS®, AMI-THERM® and AMI-FLEX® to meet specific application and performance requirements.
- Field tested to ensure protection, comfort and durability
- Custom-fabricated gloves and other protective clothing available to your specifications.
- All styles except **GL-279R** (overmitt) are wool lined and sewn with aramid thread for added seam integrity.
- **R** denotes reversible

GL 279R

- Reversible overmitt
- Unlined AMI-GLAS
- Worn over any glove or mitten for additional protection



GL 210 (shown) and GL13010

- 5 finger glove with cuff
- Made of AMI-GLAS
- **GL 13010** has double palm for added protection



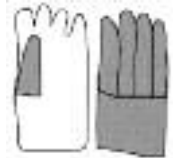
ACK-210

- Fully aluminized carbon aramid
- 5 finger glove
- For radiant heat protection



ACKGL 210

- 5 finger glove with aluminized carbon aramid back and AMI-GLAS palm



GL 225

- 5 finger AMI-GLAS glove
- Fingers, palm, thumb reinforced with special heat resistant leather for added cut resistance



GL 250R

- AMI-GLAS all-purpose mitten with reversible option available
- Moderate temperature applications



GL 275R

- AMI-GLAS mitten
- Heat resistant patch on fingers, palm and thumb for added cut resistance



GL 278R

- AMI-GLAS mitten with extra patch on fingers, palm and thumb for extra protection



GL 260R

- Full fiberglass palm patch quilted between 2 layers of AMI-GLAS fabric



Bernz-OMatic®

Welding and Cutting Torch Kit

OX2550KC – Oxygen/MAPP® Welding Torch Kit with MAPP® Gas



Instant On Trigger Start Torches

Bernzomatics' finest torches feature instant on Trigger Start Igniters and are regulated for cold weather use. All products are fast, easy to use and are considered ideal for all types of soldering and brazing projects. Product features include stainless steel burn tubes for compatibility with both MAP® and Propane Gases.

Professional Series Torches:

TS7000T

TS7000KC (w/Propane)

TS7000ZKC (w/MAPP®)

- All TS7000 models have adjustable flame control

TS4000T

TS4000KC (w/Propane)

TS4000ZKC (w/MAPP®)

Both TS7000 and TS4000 have a Rugged Cast Aluminum Body and Swirl Flame Tip.

Various replacement tips also available.

TS7000T



TS7000KC



TS7000ZKC



TS4000T



TS4000KC



TS4000ZKC



Bernz-O-Matic®

High Temperature Torches and Accessories

These powerful torches operate with either MAPP® or Propane gases. Ideal for soldering & brazing.

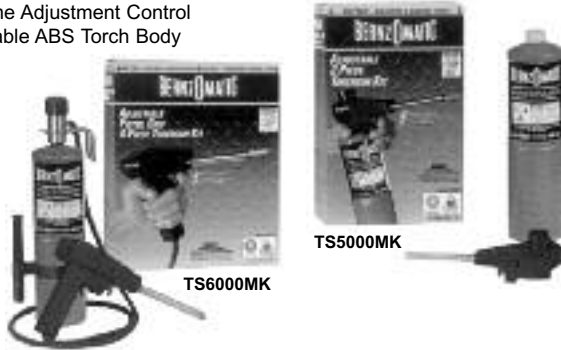
Trigger Start High Temp Soldering & Brazing Torches:

TS6000MK (w/Propane)

- Four Foot Hose, Belt Clip & Holster for "Hands Free" portability
- Pistol Grip Design

TS5000MK (w/Propane)

- Flame Adjustment Control
- Durable ABS Torch Body



Swivel Head Brazing Torches:

TS839T – MAPP®/Propane Trigger Start Brazing Torch

TS839KC – Trigger Start Brazing Torch w/Propane

TS839ZKC – Trigger Start Brazing Torch Kit w/MAPP® gas



Solid Brass Brazing Torches:

JTH7 – MAPP®/Propane Brazing Torch Kit with Hose

JT539T – MAPP®/Propane Brazing Torch



Trigger Start Accessories:

BT4756 – Gas Burntube Assembly (TS4000/TS7000)

OT4757 – Pencil Flame Burntip & Orifice Kit (TS4000/TS7000)

OT4758 – Swirl Flame Burntip & Orifice Kit (TS4000/TS7000)

OT4759 – General Purpose Flame Burntip & Orifice Kit (TS4000/TS7000)



Propane Torches

Quality product features include one touch Trigger Start igniters, stainless steel burn-tubes, tough ABS plastic torch cases and innovative designs.

TS2000T

- Trigger Start Ignition
- Regulated for cold weather performance
- Adjustable Flame Control

TS2000KC (w/Propane)

- Trigger Start Ignition
- Regulated for cold weather performance
- Adjustable Flame Control

TS1500T

TS1500KC (w/Propane)

- Push Button Ignition
- Adjustable Flame Control



Plumber's Kits:

PK1500KC

- Includes: TS1500 Trigger Start Torch, 3 oz. 100% Lead Free Solder, 1 oz. Water Soluble Flux, Flux Brush and 14.1 oz. Propane Cylinder

PK1001KC

- Includes: JT681 Pencil Flame Jet Torch, 3 oz. 100% Lead Free Solder, 1 oz. Water Soluble Flux, Flux Brush and 14.1 oz. Propane Cylinder



Classic, Brass Torches and Accessories

Jet Torches:

Legendary BernzOmatic Jet Torches feature solid brass construction with a patented jet venturi air intake. This design ensures proper air/fuel mixture providing a hotter flame for faster work with greater fuel economy

JT680 - Jumbo Flame Torch

JT95KC - 4 piece Jumbo Flame Torch Kit

- Includes: JT680 Jumbo Flame Torch, Brass Flame Spreader, GM100T Butane Lighter and 14.1 oz. Propane Cylinder

JT11 - 2 piece Jumbo Flame Torch Kit

JT681 - Pencil Flame Jet Torch



continues –

Welding

Bernz-O-Matic®

Jet Torches (continued)

JT25 - 7 piece Pencil Flame Jet Torch Kit
• Includes: JT681 Pencil Flame Jet Torch, TX405 Sparker, 810 Flame Spreader, Replacement Flints, Blow Torch Head, 14.1 oz. Propane Cylinder and Molded Plastic Carry Case



JT25

JT10 - 2 piece Pencil Flame Jet Torch Kit

JT90KC - 4 piece Pencil Flame Torch Kit
• Includes: JT681 Pencil Flame Jet Torch, 810 Flame Spreader, GM100T Butane Lighter and 14.1 oz. Propane Cylinder



JT10

JT90KC

Utility Torches:

Economical utility torches provide a consumer value option. Solid brass construction, general purpose utility flame, proven safety features, needle valve control and filtered orifice create a durable and dependable torch suitable for basic home use.

UL125 - 7 piece Pencil Flame Torch Kit
• Includes: UL2317 Pencil Flame Utility Torch, TX405 Sparker, 810 Flame Spreader, Replacement Flints, 650 Utility Flame Head, 14.1 oz. Propane Cylinder and Molded Plastic Carry Case



UL2317

UL2317 - Pencil Flame Utility Torch

UL100 - 2 piece Pencil Flame Torch Kit



UL125

UL100

Fuels and Accessories

BernzOmatic Fuels:

- TX9** - 14.1 Ounce Propane Gas Cylinder
- MG9** - 16.0 Ounce MAPP® Gas Cylinder
- OX9** - 1.1 Cubic Foot Oxygen Cylinder
- TX916** - 16.4 Ounce Propane (wide body) Cylinder
- BF9** - 2.1 Ounce Butane Cylinder



TX9

MG9

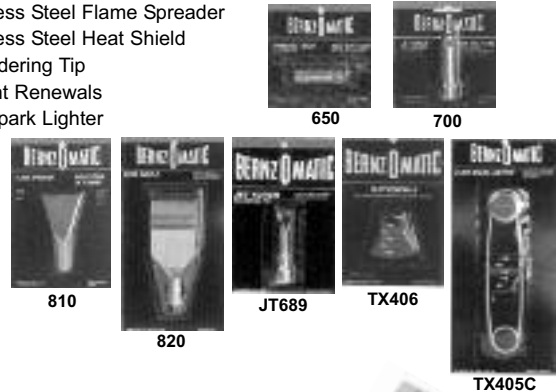
OX9

TX916

BF9

Accessories:

- 650** - 1/2" Utility Flame Head
- 700** - 1/2" Utility Flame Head
- 810** - Stainless Steel Flame Spreader
- 820** - Stainless Steel Heat Shield
- JT689** - Soldering Tip
- TX406** - Flint Renewals
- TX405C** - Spark Lighter



650

700

810

820

JT689

TX406

TX405C

Welding, Brazing and Soldering Rods:

- NS3** - Nickel Silver Brazing Rods
- WB5** - Premium Bronze Brazing Rods
- AL3** - Aluminum Soldering Rods
- PC3** - Copper Phosphorous Soldering Rods



Soldering Wire

BernzOmatic has all three types of solder in the line. Solid Wire solder is for plumbing applications, Rosin Core solder is for electrical applications and Acid Core is for general purpose applications.

Plumbing - Solid Wire:

- SSW075** - .75 oz Solid Wire Solder
- SSW300** - 3 oz. Solid Wire Solder
- SSW800** - 8 oz. Solid Wire Solder
- SSW1600** - 16 oz. Solid Wire Solder
- SSW300PK** - Plumber's Kit

• Includes: 3 oz. Solid Wire Solder, 1 oz. Water Soluble Flux, Brush and Abrasive Cloth.



SSW075

SSW300

SSW300PK

SSW800

SSW1600

- continues -

- continues -

Bernz-O-Matic®/Teleweld Inc.

Soldering Wire (continued)

Electrical –

Rosin Core:

SRC075 – .75 oz.

Electrical Solder

SRC300 – 3 oz.

Electrical Solder

SRC800 – 8 oz.

Electrical Solder



SRC075



SRC300



SRC800

General Purpose – Acid Core:

SAC075 – .75 oz. General Purpose Solder

SAC300 – 3 oz. General Purpose Solder

SAC800 – 8 oz. General Purpose Solder



SAC075



SAC300



SAC800

Soldering Accessories

Bernzomatic has included helpful accessories in the Solder line to aid in your soldering projects.

S4IN1B – Four-in-One Brush

SWSF100 – 1 oz. Water Soluble Flux

SFB400 – Five 4" Flux Brushes

SHS6X8 – Heat Shield



SWSF100



SFB400



S4IN1B



SHS6X8

Teleweld

The Telebrineller System

Now you can measure Brinell hardness anywhere - in the field - In the Plant - In the Lab - Simple, certain operation under all conditions

The Telebrineller system is a major achievement in quality assurance. Developed for use by its own welding crews in the field, Teleweld, Inc., has based this system on proven metallurgical knowledge supported by more than fifty years of field experience.

LIGHTWEIGHT – The complete Telebrineller system, in its case, weighs less than ten pounds. Easily transported to any location, it is



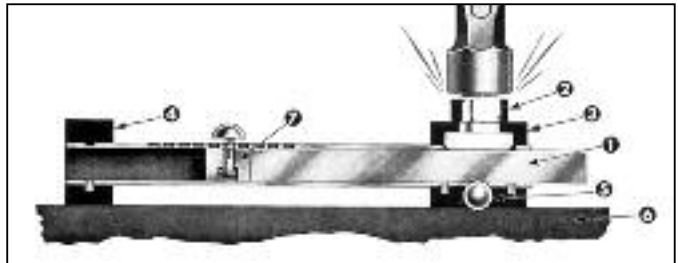
The Telebrineller System (continued)

highly practical for all Brinell hardness testing needs.

SIMPLE OPERATION – One hammer blow, measurement of the resulting impressions, and manipulation of a basic equation on the computer provided – that's all. No special training required. In a few minutes, anyone can learn to determine BHN accurately.

CERTIFIED ACCURACY – The test bars which are the core of this system are calibrated to a uniform hardness of $\pm 3\%$ of the labeled BHN. Hardness of the bars is measured by equipment whose accuracy is certified traceable to the National Standards Institute. The Telebrineller microscope is by Leica. Readings may be made within .05 millimeters.

WEATHERPROOF – Designed for field use; there are no delicate adjustments or fragile components to be concerned with. All parts are rugged, solid, able to deliver accurate measurements in all weather, under the roughest field conditions.



The Telebrineller System – Its Principle of Operation:

A test bar of known BHN, approximating the hardness of the specimen to be tested, is selected. Consistent accuracy is maintained when the test bar BHN is within 15% of the specimen BHN and is of the same general material. (Testing non-ferrous materials with carbon steel bars causes impact errors that must be compensated for by applying correction factors to the test results.) The test bar is inserted into the Telebrineller instrument and the instrument placed upon the specimen.

When the Telebrineller instrument is complete with test bar (1), the anvil (2), encased in a soft molded rubber head (3), rests on the test bar. The rubber head and a similar resting block (4), provide non-skid footing. Below the test bar, a steel impression ball (5), secured in the base of the head, is in contact with both the test bar and the specimen. The anvil is struck sharply with a three to five pound hammer. The impact, regardless of force, is transmitted equally to the test bar and, through the impression ball to the specimen metal (6), making impressions in both. The diameters of the resulting impressions are directly related to the respective hardness of the test bar and the specimen.

A spacing bar (7), operated by a spring catch and button, adjusts the test bar to a clear area for each test. By turning the bar to utilize the full length of all four faces, a total of 80 tests can be made with one bar.

Measuring Diameters

The bar is removed from the instrument and the Telebrineller Microscope positioned over the appropriate impression. The microscope provides a scale of 1/10 millimeter divisions and is designed so that the image and scale are bright and clear to the observer. A numbered division is aligned tangent to the impression and the diameter measured by the division that falls over the opposite tangent. Readings may be made easily and accurately within .05 millimeters. The impression in the specimen metal is measured in the same manner. Both measurements take just a few moments.

Determining BHN-The Brinell hardness of the specimen metal is determined quickly with a simple mathematical equation.

$$\left(\frac{\text{Diameter of Impression in Bar}}{\text{Diameter of Impression in Metal}} \right)^2$$

$$\times (\text{BHN of Test Bar}) = \text{BHN of specimen metal.}$$

EXAMPLE: Assume the impression diameter of the test bar is measured to be 3.05; the impression diameter of the specimen metal, 3.15; and the labeled BHN of the bar is 352.

$$\left(\frac{3.05}{3.15} \right)^2 \times 352 = .968 \times .968 \times 352 = 330$$

Thus the BHN of the specimen metal is 330.

This computation is simplified with the use of the Telebrineller Computer or any pocket calculator. Complete instructions are included in every Telebrineller system. Telebrineller replacement parts and test bars of hardnesses from 100 to 600 BHN are always available. Contact us for pricing and ordering information.

– continues –

Welding

Uniweld

Uniweld

OXYACETYLENE

Maintenance Outfits

These are outfits designed for the maintenance service technician that has a variety of job requirements. The outfits include an attachment for cutting steel; an oxyacetylene welding tip for brazing and welding and a gas/air adaptor with an acetylene Twister® tip for soldering and brazing without the use of cylinder oxygen. The gas/air adaptor converts the welding handle to be used with air/acetylene tips for soldering and brazing. This results in a tremendous savings of oxygen. These outfits are capable of brazing up to 1" copper tubing, welding up to 1/8" and cutting up to 1/2" steel with supplied tips.

| Part # | UPC # | Acetylene Regulator | Carrying Stand | Tanks* |
|-------------|-------|---------------------|----------------|--------|
| KLT71-4 | 82327 | RMC2 | w/o | w/o |
| KLT71-4C | 82328 | RMC2 | 500S | w/o |
| KLT71-4C-T | 82329 | RMC2 | 500S | MC/R |
| KLT71-4NP | 82330 | RMC2 | 513 | w/o |
| KLT71-4NP-T | 82331 | RMC2 | 513 | MC/R |
| KLT71-4P | 82332 | RMC2 | 511 | w/o |
| KLT71-4P-T | 82333 | RMC2 | 511 | MC/R |
| KLT71-5 | 82334 | RB2 | w/o | w/o |
| KLT71-5TR | 82335 | RB2 | 504 | w/o |

*Tanks shipped empty.

| | |
|-----------------------------|---|
| Welding Handle: | 71 |
| Welding/Brazing Tip: | Type 17 #2 |
| Acetylene Tip: | AS5 Twister® Tip |
| Adaptor: | F11 Gas/Air Adaptor |
| Cutting Attach: | CA550 |
| Cutting Tip: | 5-101 #0 |
| Oxygen Regulator: | RO |
| Accessories: | H32A 12-1/2 ft. Twin Hose WG52 Goggles FL34 Flint Lighter |



KLT71-4NP-T

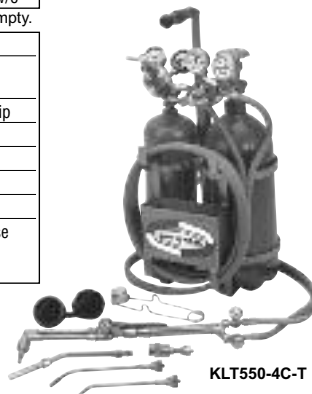
Mastar® Maintenance Outfits

The Mastar® Maintenance outfits are "The Very Best" apparatus for the Maintenance service technician who has a variety of job requirements. This outfit includes everything in a Mastar® outfit plus a gas/air adaptor with an air/acetylene Thruster® tip for soldering and brazing. The gas/air adaptor converts the welding handle for use with any of our screw connect air/acetylene tips for soldering and brazing. This conserves a considerable amount of oxygen. The capability of these outfits as supplied are: Rosebud tip for brazing up to 2-5/8" copper tubing, cutting attachment for cutting up to 1/2" steel, welding tip for brazing up to 1" copper tubing and welding up to 1/8" steel.

| Part # | UPC # | Acetylene Regulator | Carrying Stand | Tanks* |
|--------------|-------|---------------------|----------------|--------|
| KLT550-4 | 82210 | RSMC2 | w/o | w/o |
| KLT550-4C | 82211 | RSMC2 | 500S | w/o |
| KLT550-4C-T | 82212 | RSMC2 | 500S | MC/R |
| KLT550-4NP | 82213 | RSMC2 | 513 | w/o |
| KLT550-4NP-T | 82214 | RSMC2 | 513 | MC/R |
| KLT550-4P | 82215 | RSMC2 | 511 | w/o |
| KLT550-4P-T | 82216 | RSMC2 | 511 | MC/R |
| KLT550-5 | 82217 | RSB2 | w/o | w/o |
| KLT550-5TR | 82218 | RSB2 | 504 | w/o |

*Tanks shipped empty.

| | |
|---|---|
| Welding Handle: | WH550 |
| Welding & Rosebud Brazing Tip: | Type 17 #2, #15 |
| Thruster® Tip: | AT3 Thruster® Acet./Air Tip |
| Adaptor: | F11 Gas/Air Adaptor |
| Cutting Attach: | CA550 |
| Cutting Tip: | 5-101 #0 |
| Oxygen Regulator: | RSO |
| Accessories: | H32A 12-1/2 ft. Twin Hose WG52 Goggles FL34 Flint Lighter |



KLT550-4C-T

Welding Handles and Cutting Attachment

CA550 Cutting Attachment

Advanced state-of-the-art design, with heavy duty one-piece solid copper mixer, provides superior performance and lasting service. Cuts up to 2" steel using proper series 5 cutting tips.

F11 Adaptor - Adaptor converts the 71 and WH550 Welding Handles to use Gas/Air tips for brazing and soldering w/o the use of cylinder oxygen.

| Part # | UPC # | Head Angle | Type Head | Length (in) | Wt. (oz.) |
|--------|-------|------------|-----------|-------------|-----------|
| CA550 | 02600 | 90° | Forged | 8 | 15 |



71 Welding Handle

Compact, light weight, two tube silver brazed construction with front stainless steel ball point valves for one-hand fingertip control and positive shutoff. Welds up to 1/4" steel and brazes up to 6" copper tubing using proper tips.

| Part # | UPC # | Length (in) | Wt. (oz.) | "A" Hose Connection |
|--------|-------|-------------|-----------|--|
| 71 | 00300 | 6 | 8 | 3/8" - 24RH, Oxygen 3/8" - 24LH, Fuel Gas |



WH550 Welding Handle

Sturdy tube and handle design with internal O-ring seals for added safety. Rear stainless steel ball point valves for accurate gas control and positive shut off. Welds up to 1/4" steel and brazes up to 6" copper tubing using proper tips.

| Part # | UPC # | Length (in) | Wt. (oz.) | "A" Hose Connection |
|--------|-------|-------------|-----------|--|
| WH550 | 00550 | 8-1/2 | 8 | 3/8" - 24RH, Oxygen 3/8" - 24LH, Fuel Gas |



Welding and Brazing Tips

All Type 17 welding tips fit both the 71 and WH550 welding handles.

Welding tips come complete with elbow, mixer and nut. Individually packaged on an attractive 6-color point of purchase display card. Various fuel gases may be used such as Acetylene, Propane, Mapp®, and Natural gas. Note: The oxygen consumption (Standard Cubic Feet per Hour) is 1.1 times the acetylene for a neutral flame. The oxygen consumption will vary when using other fuel gases.



X-25R Small O-Ring

X-26R Large O-Ring

Tighten the tip nut firmly hand-tight

| Part # | UPC # | Acetylene Consump. SCFH | Acety./Fuel Pressure PSIG | Oxygen Pressure PSIG | Welding Metal Thkns. | Brazing Copper Tubing | Rplcmt. Elbow Type 17E | Rplcmt. Mixer & Nut UM17 |
|--------|-------|-------------------------|---------------------------|----------------------|----------------------|-----------------------|------------------------|--------------------------|
| #000 | 30250 | 1-2 | 5 | 5 | 1/32 | 1/8 | #000 | UM17-000 |
| #00 | 30251 | 2-3 | 5 | 5 | 3/64 | 1/4 | #00 | UM17-000 |
| #0 | 30252 | 2-4 | 5 | 5 | 5/64 | 1/2 | #0 | UM17-0 |
| #1 | 30253 | 3-6 | 5 | 5 | 3/32 | 3/4 | #1 | UM17-0 |
| #2 | 30254 | 5-10 | 5 | 5 | 1/8 | 1 | #2 | UM17-2 |
| #3 | 30255 | 8-18 | 6 | 7 | 3/16 | 1-1/2 | #3 | UM17-3 |
| #4 | 30256 | 0-25 | 7 | 10 | 1/4 | 2 | #4 | UM17-4 |
| #5 | 30257 | 15-35 | 8 | 12 | N/A | 3 | #5 | UM17-5 |
| #6 | 30258 | 25-45 | 9 | 14 | N/A | 4 | #6 | UM17-5 |
| #7 | 30259 | 30-60 | 10 | 16 | N/A | 6 | #7 | UM17-5 |

Uniweld

Cutting Tips

This series of cutting tips fits the CA550 cutting attachment. A wide selection is available depending on capacity and fuel gases. Individually packaged on an attractive 6-color point of purchase display card. Also available in individual boxes (to order, drop the (D) from the part number).



5-101 Series



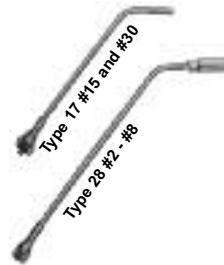
5-200 Series

Tighten the tip nut wrench tight

| Part # | UPC # | Cutting SCFH | Oxygen PSIG | Acet/Fuel PSIG | Cutting Tip Guide (in) | Desc. |
|---------------|-------|--------------|-------------|----------------|------------------------|--|
| 5-101 | | | | | | |
| #00D | 34505 | 30-35 | 20-25 | 5 | 1/4 | Acetylene |
| #0D | 34506 | 40-60 | 20-30 | 5 | 1/2 | 6 preheats for general purpose cutting. |
| #1D | 34507 | 80-85 | 30-35 | 5 | 3/4-1 | |
| #2D | 34508 | 140-180 | 35-40 | 7 | 1-2 | |
| 5-200 | | | | | | |
| #0D | 34530 | 40-60 | 20-30 | 5 | 1/2 | Propane 8 preheats for general purpose cutting. |
| #1D | 34531 | 80-85 | 30-35 | 5 | 3/4-1 | |
| #2D | 34532 | 140-180 | 35-40 | 7 | 1-2 | |
| 5-200M | | | | | | |
| #0D | 34555 | 40-60 | 20-30 | 5 | 1/2 | Mapp®, Propylene 8 preheats for general purpose cutting. |
| #1D | 34556 | 80-85 | 30-35 | 5 | 3/4-1 | |
| #2D | 34557 | 140-180 | 35-40 | 7 | 1-2 | |

Rosebud Heating Tip

These tips are ideal for brazing, soldering and heating. Select from two overall lengths (7" and 12") that are available in various size capacities. They are compatible with both the 71 and WH550 welding handles. The 7" Rosebud is ideal for brazing large copper pipe in tight work areas. Rosebud tips come complete with elbow, mixer and nut. Individually packaged on an attractive full color point of purchase display card.

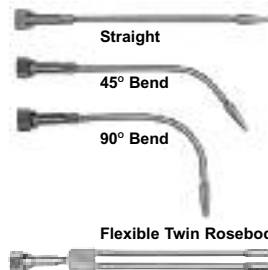


| Part # | UPC # | Overall Lgth (in) | Acety. SCFH | Oxygen Pressure PSIG | Acety. Pressure PSIG | Brazing Copper Tubing Guide (in) | Rplcmt. Mixer & Nut |
|--|-------|-------------------|-------------|----------------------|----------------------|----------------------------------|---------------------|
| Type 17 | | | | | | | |
| #15 | 31170 | 7 | 15 | 12 | 10 | 1/8-2-5/8 | UM17-5 |
| #30 | 31171 | 7 | 30 | 15 | 12 | 1/2-6 | UM17-5 |
| Type 28 | | | | | | | |
| #2 | 31450 | 12 | 9 | 8 | 7 | 1/8-1-5/8 | UM17-5 |
| #4 | 31451 | 12 | 14 | 12 | 10 | 1/2-3 | UM17-5 |
| #6 | 31452 | 12 | 30 | 15 | 12 | 1/2-6 | UM17-5 |
| #8 | 31453 | 12 | 60 | 25 | 15 | 6-8 | UM17-5 |
| Type 28TE Replacement Tip ends only | | | | | | | |
| #2 | 31460 | | | | | | |
| #4 | 31461 | | | | | | |
| #6 | 31462 | | | | | | |
| #8 | 31463 | | | | | | |

Cleaning: Use a Uniweld TCSD Tip Cleaner for cleaning holes and removing splatter from the tip face.

Flexible Brazing Tip and Twin Rosebud Heating Tip

These flexible tips can be shaped & reshaped for the next application. The welding tip and the twin rosebud heating tip both fit the 71 and WH550 welding handles. The flexible brazing tip and the twin rosebud tip have an overall length of 9". The twin rosebud tip has (2) Type 17 #30 tip ends with brazing capacity of up to 12" copper pipe.

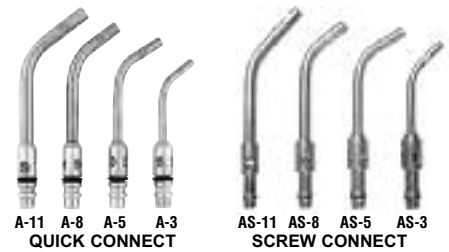


| Part # | UPC # | Acety. SCFH | Oxygen Pressure PSIG | Acety. Pressure PSIG | Brazing Copper Tubing Guide (in) | Rplcmt. Elbow | Rplcmt. Mixer & Nut |
|--------------|-------|-------------|----------------------|----------------------|----------------------------------|---------------|---------------------|
| Type 17 #9 | 31181 | 4 | 5 | 5 | Up to 7/8 | Type 17E #9 | UM17-5 |
| Type 13 #8VM | 31161 | 60 | 25 | 15 | 4-12 | Type13E #8 | UM17-5 |

AIR/GAS

Twister® Tips

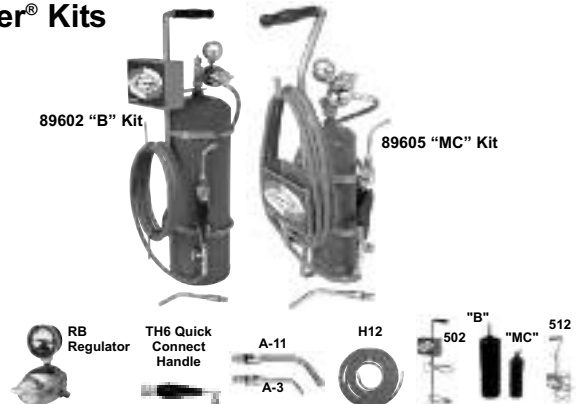
The air/acetylene Twister® is our most popular air/gas flame tool for the plumber and HVAC tradesmen. The Twister® swirl combustion tips produce a high energy efficient flame that is stable even in windy conditions. A helical blade inside the tip premixes the fuel gas and air to achieve maximum combustion. This type of flame technology maximizes the BTU's making the heat transfer the fastest of all air/acetylene flame tools.



Copper Tubing Capacity

| Part # | UPC # | Soft Solder (in) | Silver Solder (in) | Part # | UPC # |
|--------|-------|------------------|--------------------|--------|-------|
| A-3 | 43020 | 1/4 - 1 | 1/8 - 1/4 | AS-3 | 43025 |
| A-5 | 43021 | 3/4 - 1-1/2 | 1/4 - 3/4 | AS-5 | 43026 |
| A-8 | 43022 | 1 - 2 | 1/2 - 1 | AS-8 | 43027 |
| A-11 | 43023 | 1-1/2 - 3 | 7/8 - 1-5/8 | AS-11 | 43028 |

Twister® Kits



| Part # | Type of Regulator | Connect Handle | Twister® Tips | Acetylene Hose Type | Stands/Tanks |
|----------------------|---------------------|--|-------------------------|-------------------------------|--|
| Quick Connect | | | | | |
| 89600 | RB Acet. Regulator | | A-3, A-11 Twister® Tips | | without/cylinder |
| 89602 | RB Acet. Regulator | | A3, A-11 Twister® Tips | | 502 Carrying Stand w/ "B" Acetylene Tank* |
| 89603 | RMC Acet. Regulator | | A-3, A-11 Twister® Tips | | without/cylinder |
| 89605 | RMC Acet. Regulator | | A-3, A-11 Twister® Tips | | 512 Carrying Stand w/ "MC" Acetylene Tank* |
| 89620 | RB Acet. Regulator | TH6 Quick Connect Handle with Rear Control Valve | A-5 Twister® Tips | H12 12-1/2 ft. Acetylene Hose | without/cylinder |
| 89621 | RB Acet. Regulator | | A-5 Twister® Tips | | 502 Carrying Stand w/ "B" Acetylene Tank* |
| 89622 | RMC Acet. Regulator | | A-5 Twister® Tips | | without/cylinder |
| 89623 | RMC Acet. Regulator | | A-5 Twister® Tips | | 512 Carrying Stand w/ "MC" Acetylene Tank* |
| Screw Connect | | | | | |
| 89608 | RB Acet. Regulator | | A-3, A-11 Twister® Tips | | without/cylinder |
| 89609 | RB Acet. Regulator | | A3, A-11 Twister® Tips | | 502 Carrying Stand w/ "B" Acetylene Tank* |
| 89610 | RMC Acet. Regulator | | A-3, A-11 Twister® Tips | | without/cylinder |
| 89611 | RMC Acet. Regulator | | A-3, A-11 Twister® Tips | | 512 Carrying Stand w/ "MC" Acetylene Tank* |
| 89624 | RB Acet. Regulator | TH3 Quick Connect Handle with Rear Control Valve | A-5 Twister® Tips | H12 12-1/2 ft. Acetylene Hose | without/cylinder |
| 89625 | RB Acet. Regulator | | A-5 Twister® Tips | | 502 Carrying Stand w/ "B" Acetylene Tank* |
| 89626 | RMC Acet. Regulator | | A-5 Twister® Tips | | without/cylinder |
| 89627 | RMC Acet. Regulator | | A-5 Twister® Tips | | 512 Carrying Stand w/ "MC" Acetylene Tank* |

*Tanks shipped empty.

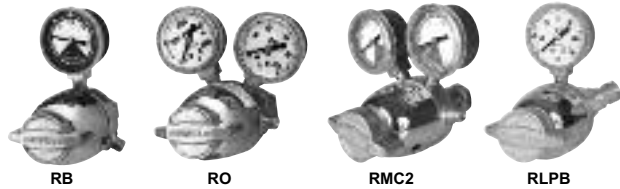
Welding

Uniweld

FLAME TOOL ACCESSORIES

R Series Regulators

- Compact design with rear inlet service and various CGA cylinder connections
- Forged brass body with polished chrome plated bonnet
- Low profile forged brass pressure adjusting screw
- Specially compounded diaphragm and seat material
- 1-1/2" gauges with one piece polycarbonate lenses
- UL Listed



| Gas Service | Part # | UPC # | CGA Inlet | Outlet Conn. | 1-1/2" Gauges Delivery/Contents | Delivery PSI |
|-------------------|--------|-------|-----------|--------------|---------------------------------|--------------|
| Oxygen | RO | 12000 | 540 | "A" RH | 100/4000 | 2-60 |
| | ROB | 12001 | 540 | "B" RH | 100/4000 | 2-60 |
| Acetylene | RW | 12002 | 510 | "A" LH | 30/400 | 2-15 |
| | RWB | 12003 | 510 | "B" LH | 30/400 | 2-15 |
| | RCA | 12004 | 300 | "A" LH | 30/400 | 2-15 |
| | RCAB | 12005 | 300 | "B" LH | 30/400 | 2-15 |
| | RMC | 12006 | 200 | "A" LH | Contents | 2-15 |
| | RMC2 | 12007 | 200 | "A" LH | 30/Contents | 2-15 |
| | RMC40 | 12008 | 200 | "A" LH | 1 Plug/Contents | 2-15 |
| | RMCW+ | 12009 | 200 | "A" LH | Contents | 2-15 |
| | RB | 12010 | 520 | "A" LH | Contents | 2-15 |
| | RB2 | 12011 | 520 | "A" LH | 30/Contents | 2-15 |
| | RB40 | 12012 | 520 | "A" LH | 1 Plug/Contents | 2/15 |
| | RBW+ | 12013 | 520 | "A" LH | Contents | 2-15 |
| LP Fuel Gas | RLP | 12014 | 510 | "A" LH | 60 Delivery/1 Plug | 2-50 |
| Mapp [®] | RLPB | 12015 | 510 | "B" LH | 60 Delivery/1 plug | 2-50 |
| Argon | RAR** | 12016 | 580 | 5/8-18RH-F | 40scfh/4000 | 10-40scfh |
| Nitrogen | R15NI | 12018 | 580 | "B" RH | 100/4000 | 2-60 |

All "A" Outlet fitting models available with "B" Outlet fitting. To order, add "B" to the Part No. Pressure relief devices are not designed to protect downstream equipment. **The (RAR) Argon regulator uses a 10/40scfh flowgauge to measure Argon flow. +Dual delivery outlet.

Spiral Cleaners

- Quality aluminum case - Cleaning data stamped on back of case
- Rustproof, high quality stainless steel wire
- Strongest construction; spiral is roll-formed
- Exclusive LOCK-IN-KNOT on small wires
- Long spiral cleans larger number of tip styles
- Tapered pilot ends will not damage tip orifice
- Hard steel file included in each case
- Free name and address on cover of 144 sets or more ordered (2 lines, 31 letters per line)
- Customized company logo printed on our blue anodized or aluminum cover available

| Part # | UPC # | Desc. |
|--------|-------|---|
| TCSD | 26060 | Standard sizes 75-49 |
| TCJD | 26062 | Jumbo sizes 48-30 |
| TCMD | 26064 | Master sizes 75-30 |
| TCPD | 26061 | Propane sizes 67-49, plus 3 blades for spline cleaning. |
| TCLD | 26063 | Xtra Long sizes 75-49. (Box of 6) |

"D" denotes display card



Check Valves

- Helps protect against reverse flow of gases
- Conforms to OSHA safety standards, UL Listed*
- Easy to install, test and service
- Color coded for easy identification Green for oxygen - Red for fuel gas



| Single | 9/16" - 18 "B" Fitting* | | | | 3/8"-24 "A" Fitting | |
|-----------------------------------|-------------------------|-------|--------|-------|---------------------|-------|
| | Regulator** | | Torch | | Torch | |
| | Part # | UPC # | Part # | UPC # | Part # | UPC # |
| Oxy | RCV100 | 10201 | TCV100 | 04051 | TCV10 | 02651 |
| Fuel | RCV101 | 10202 | TCV101 | 04052 | TCV11 | 02652 |
| Display Set of (1) Oxy & (1) Fuel | RCVB | 10200 | TCVB | 04050 | TCVA | 02650 |

Check valves provide added protection against reverse flow of gases, but not flame flashback. They should be tested for leakage and flow regularly. Check valves on regulators give best service life. **For "A" Outlet regulators use adaptor F58R or F58L to connect "B" size regulator check valves on small portable outlets.

Flashback Arrestors

A backfire or flashback occurs when mixed gases are ignited in the torch, hose or regulator. Uniweld flashback arrestors are designed specifically to help prevent and stop these dangerous situations by preventing reverse flow of gases and quenching backfires and flashbacks at the torch or regulator.

- Stops backfire and flashback by quenching the flame at the torch or regulator
- Built in check valve UL Listed*
- Available for torch and regulator

Flashback arrestors should be installed at the torch to help protect the technician and at the regulator to help protect equipment.



| Single | 9/16" - 18 "B" Fitting* | | | | 3/8"-24 "A" Fitting | | |
|-----------------------------------|-------------------------|-------|--------|-------|---------------------|-------|---------------|
| | Regulator | | Torch | | Regulator | | Torch |
| | Part # | UPC # | Part # | UPC # | Part # | UPC # | UPC # |
| Oxy | RFA100 | 10206 | TFA100 | 04056 | RFAM100 | 10211 | TFAM100 04061 |
| Fuel | RFA101 | 10207 | TFA101 | 04057 | RFAM101 | 10212 | TFAM101 04062 |
| Display Set of (1) Oxy & (1) Fuel | RFAB | 10205 | TFAB | 04055 | RFAA | 10210 | TFAA 04060 |

ALLOYS

Phos-Copper Brazing Alloys

Ideal for brazing tubing in the refrigeration, air conditioning, plumbing and maintenance trades.

Phos-Copper Alloys may be used for joining copper to copper and copper to brass base metals. No flux is required when brazing copper to copper but is required when brazing copper to brass base metals.

UNI-1000

- Superb free flowing characteristics
- Ideal for brazing joints with close tolerances
- Can be applied to such uses as brazing phosphor bronze chemical hardware, naval brass condenser plates, and manganese bronze pump rods and shafts

UNI-1002

- Broad melting range and medium flow
- Good for bridging across large gaps and for brazing small fillets
- Well suited for brazing nickel silver optical goods, leaded bronze forgings, and yellow brass bellows

UNI-1005

- Broad melting range
- Good for filling large gaps and poor fit-up areas, as well as brazing larger fillets
- Brazing copper tubing for plumbing, brass pump liners and phosphor bronze flexible hose



- continues -

Uniweld

Phos-Copper Brazing Alloys (continued)

UNI-1006

- Extremely fluid
- Excellent on tight fit-up joints and precise tolerances.
- Extremely versatile
- Used to braze beryllium copper spark resistant tools, nickel marine heat exchangers, and manganese bronze marine hardware

UNI-1015

- Wide melting range
- Flows quite slowly
- Best for joints with large clearance, poor fit-up areas and large fillets
- Brazing nickel silver plated flatware, leaded brass wheels and pinions, and red brass grillwork

| Product Designation | % Ag | Part #'s | | | | AWS Class Per A5.8 | Solidus (Melting pt.) °F | Liquidus (Flow pt.) °F | Brazing Temp °F |
|---------------------|------|--------------|--------|-----------------|--------|--------------------|--------------------------|------------------------|-----------------|
| | | 3/32 x 18 rd | | .050 x 1/8 x 18 | | | | | |
| | | 1 lb. | 25 lb. | 1 lb. | 25 lb. | | | | |
| UNI-1000 | 0 | A11F1 | A11FC | A11T1 | A11TC | BCuP-2 | 1310 | 1476 | 1350-1550 |
| UNI-1002 | 2 | A91F1 | A91FC | A91T1 | A91TC | BCuP-6 | 1190 | 1450 | 1350-1500 |
| UNI-1005 | 5 | A21F1 | A21FC | A21T1 | A21TC | BCuP-3 | 1190 | 1495 | 1325-1500 |
| UNI-1006 | 6 | A31F1 | A31FC | A31T1 | A31TC | BCuP-4 | 1190 | 1465 | 1275-1450 |
| UNI-1015 | 15 | A41F1 | A41FC | A41T1 | A41TC | BCuP-5 | 1190 | 1475 | 1300-1500 |

High Silver Cadmium-Free Silver Brazing Alloys

UNI-1035

- Sluggish flow characteristics
- Well suited for carbide tip brazing onto cutting tools
- Most popular for brazing steam turbine blades made of 403 or 410 stainless steel
- deal for brazing the following base metals: Steel, Copper and Copper Alloys, Nickel and Nickel Alloys



UNI-1045

- Broad melting range
- Well suited to side clearances
- Popular in electrical, food and dairy industries
- Ideal for brass parts
- Ideal for brazing the following base metals: Brass, Steel, Nickel and Nickel Alloys, Copper and Copper Alloys

UNI-1056

- Low melting point
- Very well suited to brazing leaded brass
- Brazing of screw machine parts, pump cylinders and gears
- Ideal for brazing the following base metals: Nickel and Nickel Alloys, Stainless Steel

| Product No. | % Ag | Part #s | | | | | | AWS Class Per A5.8 | Solidus (Melting Point) °F | Liquidus (Flow Point) °F | Brazing Temp. °F |
|-------------|------|-------------|--------|--------|-------------|--------|--------|--------------------|----------------------------|--------------------------|------------------|
| | | 1/16 x Coil | | | 3/32 x Coil | | | | | | |
| | | 1T oz. | 3T oz. | 5T oz. | 1T oz. | 3T oz. | 5T oz. | | | | |
| UNI-1035 | 35 | A83DT | A83DU | A83DV | A83FT | A83FU | A83FV | BAG-35 | 1265 | 1390 | 1390-1650 |
| UNI-1045 | 45 | A63DT | A63DU | A63DV | A63FT | A63FU | A63FV | BAG-5 | 1225 | 1370 | 1370-1550 |
| UNI-1056 | 56 | A53DT | A53DU | A53DV | A53FT | A53FU | A53FV | BAG-7 | 1145 | 1205 | 1205-1400 |

Silver Bearing Solder Unibrite-1450A Acid flux cored lead free silver bearing solder

- Free of cadmium, zinc or antimony
- Retains bright, shiny finish
- Extremely narrow plastic range
- High tensile strength
- Stronger than lead tin solders



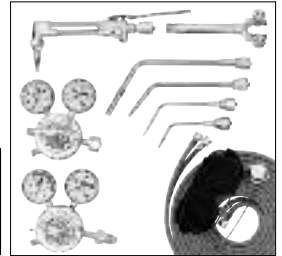
| Product Designation | Part Numbers 1 lb. Spool | | | | Solidus (Melting pt) °F |
|---------------------|--------------------------|-------|-------|-------|-------------------------|
| | 1/16" x 10" | 1/16" | 3/32" | 1/8" | |
| Unibrite-1450A | B1KD9 | B14D1 | B14F1 | B14H1 | 430 |

CUTTING & WELDING OUTFITS

– V STYLE OUTFITS –

Roughneck

The Roughneck is a complete heavy duty outfit with all the necessary components for industrial & commercial applications including cutting, brazing, heating and welding.



| Capacity | As Supplied | With Optional Tips |
|---------------|-----------------|--------------------|
| Cutting range | 3/4" | 8" |
| Welded Range | 1/2" | 3" |
| Heating Range | 30/80 CFH acet. | 90/220 CFH acet. |
| | 118,000 BTU/HR. | 324,000 BTU/HR. |

| Part # | Torch Handle | Cutting Atchmt. | Cutting Tip | Weld/Braze Tip | Heating Tip | Oxygen* Regulator | Acetylene* Regulator |
|-----------|--------------|-----------------|--------------|---------------------|----------------|-------------------|----------------------|
| OPH1-780A | WH360 | 780A | 1-101 Size 1 | Type 4 Size 1, 3, 5 | Type 11 Size 8 | RV8010 CGA540 | RV8011 CGA510 |

Accessories: Twin Hose 25'-1/4" "B", Goggles, Lighter

* Dual scale gauges and other regulator connections available upon request. To order with CGA300 add (-1) to part number.

Professional

- The Professional is a basic heavy duty cutting outfit. The ultimate for construction and industrial applications. Additional accessories are required.
- The KV outfit includes the RV Series regulators which incorporate a durable stainless steel diaphragm, an accessible seat assembly, and easy to read single scale brass cased 2-1/2" gauges.
- KR outfit includes the RUH83 series regulators which incorporate a tri-layered reinforced diaphragm, a heavy duty nozzle & seat assembly, and easy to read single scale 2-1/2" gauges.
- The outfits come with either our 830 or 850 series Cutting Torches which have precision CNC machined forged body and a time tested universal mixer for all fuel gases 3 PSIG and above with the proper tip.



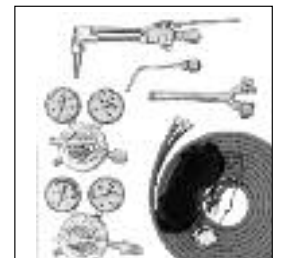
| Metal Thickness | |
|-------------------------------|-----------|
| Cutting range with proper tip | up to 12" |

| Part # | Hand Cutting Torch | Oxygen* Regulator 5-125-PSIG | Acetylene* Regulator 2-15 PSIG | Gauges (in) |
|----------|--------------------|------------------------------|--------------------------------|-------------|
| KR830-21 | 830-21 (90°) | RUH8310 | RUH8311 | 2-1/2 |

* Dual scale gauges and other regulator connections available upon request. To order with CGA30 add (-1) to part number.

All American - KAV780A

This All American is a basic heavy duty outfit with the necessary components for industrial and commercial applications including cutting, brazing and welding. Optional equipment may be added as needed.



| Capacity | As Supplied | With Optional Tips |
|---------------|-------------|--------------------|
| Cutting range | 3/4" | 8" |
| Welded Range | 3/32" | 3" |
| Heating Range | — | 90/220 CFH acet. |
| | | 324,000 BTU/HR. |

| Part # | Torch Handle | Cutting Atchmt. | Cutting Tip | Weld/Braze Tip | Oxygen* Regulator | Acetylene* Regulator |
|---------|--------------|-----------------|--------------|----------------|-------------------|----------------------|
| KAV780A | WH360 | 780A | 1-101 Size 1 | Type 4 Size 1 | RV8010 CGA540 | RV8011 CGA510 |

Accessories: Twin Hose 20'-1/4" "B", Goggles, Lighter

* Dual scale gauges and other regulator connections available upon request. To order with CGA300 add (-1) to part number.

Welding

Uniweld

All American - KM350

This All American is a basic medium duty outfit with the necessary components for industrial and commercial applications including cutting, brazing and welding. Optional equipment may be added as needed.



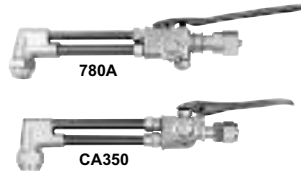
| Capacity | As Supplied | With Optional Tips |
|---------------|-------------|------------------------------------|
| Cutting Range | 1/2" | 6" |
| Welding Range | 1/8" | 1-1/4" |
| Heating Range | — | 30/80 CFH acet. 118,000 BTU/HR. |

| Part # | Torch Handle | Cutting Atchmt. | Cutting Tip | Weld/Braze Tip | Oxygen* Regulator | Acetylene* Regulator |
|--------|--------------|-----------------|-----------------|-------------------|-------------------|----------------------|
| KM350 | WH350 | CA350 | 3-101 Size 0 | Type 13 Size 2 | MR8210 CGA540 | MR8211 CGA510 |

Accessories: Twin Hose 20'-3/16" "B", Goggles, Lighter
* Dual scale gauges and other regulator connections available upon request. To order with CGA300 add (-1) to part number.

V Style Cutting Attachments

- Unique one piece copper universal mixer sets the industry standard for all fuel gases 3 PSIG and above with the proper tip.
- Forged brass head and body precision CNC machined.
- Copper nickel tubes for strength and heat dissipation.
- Stainless steel ball point valve for accurate gas control and positive shutoff.
- Stainless steel high pressure cutting oxygen lever.

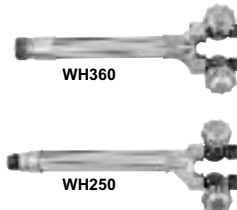


| Part # | Length (in) | Weight (oz) | Head Angle (°) | Cutting Cap. (in) | Compatible Torch Handles |
|--------|-------------|-------------|----------------|-------------------|--------------------------|
| 780A | 10-1/2 | 32 | 90 | 8 | WH360/WH360L |
| CA350 | 8 | 15 | 90 | 6 | WH350 |

Please call for more information on these and other Cutting Attachments.

V Style Torch Handles

- Proven reliable design.
- Torch handles are used with all fuel gases, acetylene, Mapp®, propane, butane, natural gas, hydrogen and propylene.
- Stainless steel ball point valves for accurate gas control and positive shutoff.
- O-ring sealed tube within a tube construction for long life and easy maintenance.
- Easy to hold ribbed brass handle.



| Part # | UPC# | Length (in) | Weight (oz) | Hose Conn. | Welding Cap. (in) | Heating Cap. | Compatible Cutting Attach. |
|--------|-------|-------------|-------------|-----------------------|-------------------|-------------------|---|
| WH360 | 00150 | 9 | 18 | "B" 9/16" - 18 Thread | 3 | 324,000 BTU/acet. | 780A (90°) 3-780A (90°) 780 (75°) 3-780 (75°) 780B (180°) |
| WH250 | 00001 | 8-1/2 | 12 | "B" 9/16" - 18 Thread | 1/4 | 88,000 BTU/acet. | CA250 (90°) CA550 (90°) |

V Style Hand Cutting Torches

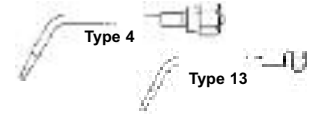
- Precision CNC machined forged brass head and body.
- Copper nickel tubes for strength and heat dissipation.
- Stainless steel ball point valves for accurate gas control and positive shutoff.
- Stainless steel high pressure cutting oxygen lever.
- Visible external reverse flow check valves for ease of testing and service.
- Time tested universal mixer for all fuel gases 3 PSIG and above with proper tip.
- Capable of cutting up to 12" with proper tip.



| Part # | UPC # | Cutting Cap. (in) | Torch Lgth. (in) | Torch Wt. (oz) | Lever Position |
|--------|-------|-------------------|------------------|----------------|----------------|
| 830-21 | 04001 | 12 | 21 | 58 | Top Rear |
| 850-21 | 04101 | 12 | 21 | 58 | Bottom Rear |

V Style Complete Welding Tips

Oxy / Acetylene / Hydrogen / Mapp® / Propane / Natural Gas



| Tip Type Part # | Available Tip Sizes | Use with Welding Torch Series | Application | Elbow Tip Thread Spec. Mixer End | Mixer Thread Spec. |
|--------------------------|---------------------|-------------------------------|-----------------------------------|----------------------------------|--------------------|
| Victor® Mix Style | | | | | |
| Type 4 (W) | 000 - 4 | WH360, WH360L | Welding Heating Brazing Soldering | 5/16" - 27(M) | 5/16" - 27(F) |
| | 5 - 10 | | | 7/16" - 20(M) | 7/16" - 20(F) |
| Victor® Style | | | | | |
| Type 13 (W-1) | 000 - 4 | WH350 | Welding Heating Brazing Soldering | 5/16" - 27(M) | 5/16" - 27(F) |
| | 5, 6, 7 | | | 3/8" - 24(M) | 3/8" - 24(F) |

V Style Complete Heating Tip Oxy/Acetylene



| Tip Type Part # | Available Tip Sizes | Use with Welding Torch Series | Application | Elbow Tip Thread Spec. Mixer End | Mixer Part # Thread Spec. |
|----------------------|---------------------|-------------------------------|---------------------------|----------------------------------|---------------------------|
| Victor® Style | | | | | |
| Type 11 (MFA) | 5, 6, 8 | WH360, WH360L | Pre-Heating Straightening | 5/16" - 27(M) | UM11 5/16" - 27(F) |
| | 10, 12, 15 | | | 1/2" - 27(M) | UM11-1 1/2" - 27(F) |

REGULATORS - SINGLE STAGE

RV 80 Heavy Duty Series

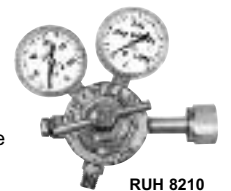
- Forged brass body and bonnet
- Easy-to-read single scale 2-1/2" gauges
- 3-1/4" Stainless Steel diaphragm
- Heavy duty mechanical stem type seat & nozzle assembly
- Delrin bushing for smooth flow adjustment
- Removable back plug for ease of seat service
- Porous metal inlet filter (except CO₂ models)
- Fine mesh filter screen between inlet seat and body
- Pressure relief device for low pressure gauge protection only
- UL Listed



| Single Stage Part # | UPC # | CGA Inlet | Outlet Connection | Del. PSIG | Replacement 2-1/2" Gauges Part # |
|---------------------|-------|---------------|------------------------|-----------|----------------------------------|
| RV8010 | 10010 | Oxygen 540 | "B" (RH) 9/16" - 18(M) | 5-125 | G24, 200 PSI G27, 4000 PSI |
| RV8011 | 10012 | Acetylene 510 | "B" (LH) 9/16" - 18(M) | 2-15 | G22, 30 PSI G21, 400 PSI |

RUH82 Medium Duty Series

- Machined brass body
- Polished chrome bonnet
- Easy-to-read single scale 2" gauges
- 2" tri-layered reinforced neoprene diaphragm
- Heavy duty mechanical stem type seat & nozzle assembly
- Delrin bushing for smooth flow adjustment
- Porous metal inlet filter (except CO₂ models)
- Fine mesh filter screen between inlet seat and body
- Pressure relief device for low pressure gauge protection only
- UL Listed



| Single Stage Part # | UPC # | CGA Inlet | Outlet Connection | Del. PSIG | Replacement 2-1/2" Gauges Part # |
|---------------------|-------|---------------|------------------------|-----------|----------------------------------|
| RUH8210 | 11000 | Oxygen 540 | "B" (RH) 9/16" - 18(M) | 5-125 | G4S, 200 PSI G7S, 4000 PSI |
| RUH8211 | 11001 | Acetylene 510 | "B" (LH) 9/16" - 18(M) | 2-15 | G2S, 30 PSI G1S, 400 PSI |

Uniweld

R Light Duty Series

- Forged brass body
- Polished chrome bonnet
- Easy-to-read single scale 1-1/2" gauges
- 1-5/8" tri-layered reinforced neoprene diaphragm
- Mechanical stem type seat
- Porous metal inlet filter
- Rear inlet cylinder connection
- Forged brass adjusting screw with locking retaining ring
- Blow off disc type pressure relief for low pressure gauge protection only
- UL Listed



| Single Stage Part # | UPC # | CGA Inlet | Outlet Connection | Del. PSIG | Replacement 2-1/2" Gauges Part # |
|---------------------|-------|---------------|-----------------------|-----------|----------------------------------|
| RMC | 12006 | Acetylene 200 | "A" (LH) 3/8" - 24(M) | 2-15 | G19, Contents (400 PSI Max) |
| RB | 12010 | Acetylene 520 | "A" (LH) 3/8" - 24(M) | 2-15 | G19, Contents (400 PSI Max) |

ACCESSORIES

TWIN HOSES:

Hose connections: "A" 3/8" - 24, "B" 9/16" - 18

| Part # | UPC # | Lgth. (ft) | Conection |
|--|-------|------------|-----------|
| *Twin Hose 3/16", Oxy/Acetylene | | | |
| H32A | 43510 | 12-1/2 | "A" |
| H32B | 43512 | 12-1/2 | "B" |
| H32AB | 43511 | 12-1/2 | "AB" |
| H33A | 43513 | 25 | "A" |
| H33B | 43515 | 25 | "B" |
| H33AB | 43514 | 25 | "AB" |
| *Twin Hose 1/4", Oxy/Acetylene | | | |
| H43B | 43520 | 25 | "B" |
| H44B | 43521 | 50 | "B" |
| H100B | 43522 | 100 | "B" |



* Twin hose available by the reel and special lengths, contact customer service.

FILE FLINT LIGHTERS:

- **FL3437** (UPC# 43403) - Round file flint lighter with fling renewals on point of purchase card
- **FL34** (UPC# 43404) - Round file flint lighter (box of 10)
- **FL37** (UPC# 43405) - Fling renewals (pkg. of 5)
- **FL35** (UPC# 43406) - Triple flint lighter
- **FL36** (UPC# 43407) - One of 3 fling renewal unit



WRENCHES:

- **W94** (UPC# 43410) - B and MC box wrench
- **W05** (UPC# 43408) - B and MC combination wrench for cylinders, torches, and "A" size hose nuts
- **W06** (UPC# 43409) - 6 Way wrench for torches, cylinders & hose



GOGGLES:

- **WG52** (UIPC# 43401) - Welding Goggles eyecup type
- **WG53** (UPC# 43402) - Welding goggles can be worn with glasses



ALLOYS

Brazing Flux

Flux:

- **UNI-1000:** Silver brazing flux
- **UNI-1500:** General brazing flux



Maintenance and Repair Alloys: Mild Steel

- **UNI-2000:** A premium mild steel electrode. Commonly used on applications requiring short spot welds because of easy restrike characteristics.
- **UNI-2400:** A chamfering or gouging electrode. It is a high performance preparation tool and works well with all ferrous and non-ferrous metals.



Wear Facing:

- **UNI-6000:** Recommended for severe abrasion applications along with moderate impact. Used heavily in construction, mining, brick and clay industries
- **UNI-6200:** An extremely tough built-up alloy with compressive strength. Applications include building up and padding of carbon and low alloy steels.

ARC Welding Electrodes

AWS Specification Grades: Mild Steel

- **UNIPIPE®-6:** A deep penetrating low splatter all purpose electrode for mild steels. This electrode is usable in all positions and has a wide range of applications including tanks, pipe welding, steel casting repairs machinery parts and structural fabrication.
- **UNI-6011:** An all position electrode designed for use with AC power sources. It is used on a wide range of steel based metals, has a fine spray transfer, and a high or welder appeal in all positions.
- **UNI-6013:** A low penetration, easy welding all position electrode for mild steels. It works well even with poor fit-up, smooth flat bead appearance, and has easy slag removal.
- **UNI-7014:** A modified iron powder, mild steel electrode. It has high speed deposition, smooth arc transfer with low penetration, works well with poor fit-up joints, and good restrike characteristics.
- **UNI-7018:** A low hydrogen electrode. It produces X-ray quality welds, high impact fracture resistance, and eliminates weld defects on problem steels.
- **UNI-7018AC:** This is a general purpose electrode for low, medium and high carbon steels and some high strength low alloy steels. It is also excellent for skip or tack welders.
- **UNI-11018M:** A low hydrogen low alloy electrode. It is designed for application requiring at least 100,000 psi tensile strength, good ductility, and crack resistance along with high notch toughness at temperatures of -60°F.



AWS Specification Grades: Cast Iron

- **UNI-55:** A nickel-iron electrode for welding cast iron. It has higher strength and ductility than the straight nickel electrodes. Deposits are machinable but harder and more resistant to abrasion than UNI-99.
- **UNI-99:** A nickel electrode for welding cast iron. For repair of castings when machining is to be done after welding. High nickel content with an extruded coating.

