



METABO CORPORATION
Post Office Box 2287
West Chester, PA 19380

Electric Power Tools and Accessories
Grinding Wheels and other Abrasives

Telephone: (800) 638-2264
(610) 436-5900
Telefax: (800) 638-2261
(610) 436-9072

e-mail info@metabousa.com

May 16, 2014

Announcement of Recall; Metabo W14-150 Ergo Angle Grinders

Ref#14-501

Metabo Corporation takes reports of potential product safety matters seriously and investigates these reports fully based on the information provided.

It has come to our attention that under certain conditions, the switch of the W14-150 Ergo angle grinder can stick in the 'on' position. Two such incidents have been verified and there have been no injuries. Because of the potential for injury, a product recall has been instituted.

What to do:

Distributors: Immediately stop selling the W14-150 Ergo angle grinders. Please determine if any inventory on hand falls into the group of recalled tools. (refer to page two for how to identify the tools in the group) If so, please contact your Metabo representative, or contact Metabo directly at 800-638-2294, extention 253 to arrange for rework or replacement.

You should also make every effort to contact customers who purchased tools between March 2013 and April 2014 and make them aware of the recall.

Consumers: Immediately stop using any W14-150 Ergo angle grinder that falls into the recall group, and contact Metabo Corporation at 800-638-2264, extention 253, or contact Metabo's Authorized service station to arrange for repair or replacement. Your closest authorized service station can be found at http://www.metabo.us/Service-Centers-USA.5317.0.html?&no_cache=1

Please refer to the following page for a full description of the tools in question, the time period involved, and the serial number range of the recalled group.

Metabo Corporation, 1231 Wilson Drive, West Chester, PA 19380

Recall of W14-150 Ergo Angle Grinders

Ref #14-501

For Immediate Release
May 16, 2014

Name of product: **W14-150 Ergo 12 Amp Angle Grinders**

Model numbers affected: 606251420 and 606251440

Serial numbers affected: 3010000001 to 4020031488



Hazard: Under certain conditions, the on/off switch can stick in the on position.

Incidents / Injuries: Two incidents have been reported and there have been no injuries.

Products were sold through industrial/construction distribution and internet sellers from March 2013 to April 2014.

The grinders were manufactured in Germany.

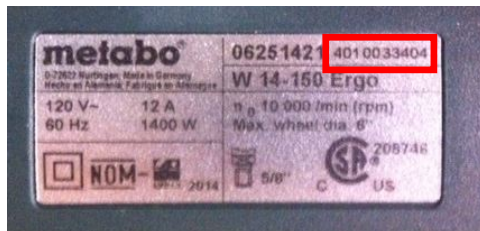
Action Required:

- **Product in Distribution Channels:** W14-150 Ergo grinders within the serial number range should be quarantined immediately, and returned to Metabo for rework or replacement.
- **Consumers** with these angle grinders should stop using them immediately and contact Metabo Corporation or it's authorized service station to arrange for repair or replacement.

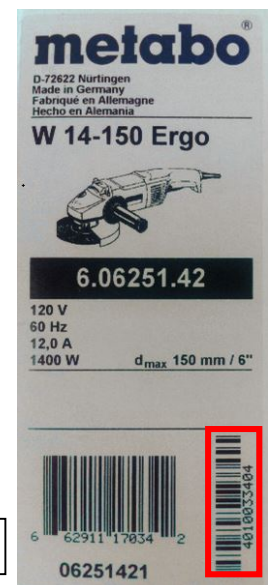
How to determine if the tool is in the recalled class:

Serial numbers between 3010000001 to 4020031488 are included in the class.

The Serial number is found on the tool, or on the carton as shown below.



Tool Rating Label



Carton Label

Contact Metabo Corporation toll free at 800-638-2264 ext. 253 between the hours of 7:00 am and 5:00 pm ET, or email info@metabousa.com for more information. Metabo's Authorized service center locations can be found at http://www.metabo.us/Service-Centers-USA.5317.0.html?&no_cache=1