

ABRASIVE



| | |
|---------------------------------|-------------|
| Index | |
| Grinders. | 44 – 53, 57 |
| Trim Saw | 54 |
| Material Removal Tool | 55 |
| Cutoff Tools | 56 – 57 |
| Abrasive Accessories. | 58 |

ABRASIVE

Make Easy Work Out Of A Daily Grind

As manufacturing materials advance, so do the requirements for the tools to work on them. This means new speeds and attachments to handle the demands of increased precision and waste reduction.

The right tool for the job

When selecting a grinder and accessories for your application, be sure to choose one with enough horsepower to drive the abrasive wheel you are using. This will allow the grinder's speed to work for you. When the operator bears down on an under-powered tool, it slows the rpm output and reduces overall efficiency.



Industrial Grinders

Sioux has a great selection of inline and right angle grinders with collet sizes from 1/4" to 1/2" & 3 mm – 8 mm for a variety of applications. Speeds range up to 25,000 rpm to get the job done quickly and efficiently. Some models offer a choice of throttle control that is most convenient and comfortable for the operator. We also have extended models that fit into tight, hard to reach places.

Abrasive Grinders Principles of Operation

When wheels, pads or other accessories are attached to the spindle, the tool can be used to remove metal or composites in a variety of ways.

Abrasive Safety

Grinders can cause flying particles. Proper eye protection must be worn at all times by tools user and bystanders.

Under improper use and wear, Air grinders can cause serious injury and death. The following instructions are important and should be followed explicitly but cannot cover all contingencies. Good judgment is always required.

Using a grinder without a guard can cause injury. The grinder is to be operated with an appropriate guard at all times when a grinding wheel is used. Replace a damaged guard. The guard is to be the proper one for the wheel being used.



Damaged grinding wheels can explode. Check the wheel for damage before mounting, such as chips and cracks. Handle wheels carefully to avoid dropping or bumping. Protect wheels from extremes of temperature and humidity. Check wheels immediately after any unusual occurrence that may damage wheels.

Over speeding wheels can explode. Check the speed rating of the accessory or the speed printed on the wheel. This speed must be greater than the name plate speed of the grinder/sander and the actual speed of the grinder/sander as measured with a tachometer.

Unsecured work can move violently when grinding. Secure work; use clamps or vise to hold work.

Grinders may coast for a short time after the trigger is released. Be sure tool has come to a complete stop before setting it aside.

Grinding wheels that malfunction or spin off can cause injury. Be certain that all wheel, flanges, nuts and related equipment are in good shape, the proper ones for the type and size of wheel being used, and are securely fastened.

Exploding wheels can cause injury or death. If the normal sound of the grinder changes, or if it vibrates excessively, shut it off immediately, remove the wheel, and check speed with tachometer.

Unexpected starts can cause injury. Be sure actuator is off before hooking up air.

Breathing grinding dust can cause injury. Do not breathe grinding dust. Use approved mask.

Explosions and fire can cause injury. Only grind metals if the area is free of combustible or explosive materials or vapors.

Contact with rotating grinding wheels can cause injury. Keep hands and other body parts away from grinding wheels and sanding pads and disks to prevent cutting or pinching. Wear protective clothing and gloves to protect hands.

Tools starting unexpectedly can cause injury. Always remove tool from air supply and activate trigger to bleed air line before making any adjustments, changing accessories, or doing any maintenance or service on the tool.

Flying grinding wheels or accessories can cause injury. Tighten collet securely. Match wheel or accessory shaft diameter to chuck or collet.

Exploding or flying parts can cause injury. Do not use cut off wheels or router bits with die grinders.

STRAIGHT DIE GRINDERS



SDG03S25



SDG05S23



SDG7S25F



SDG10S25F

Performance:

Power: 0.3 hp (0.2 kW) – 1 hp (0.75 kW)
Speed: 12,000 rpm – 25,000 rpm
Collet Size: 1/4" & 6 mm

Features:

Lockoff Lever
Front or Rear Exhaust
Built-in Speed Control

Straight Die Grinders



| Model Number | Free Speed | Weight | | Length | | Air Consumption | | Collet Size | Exhaust |
|---|------------|--------|------|--------|-----|-----------------|------|-------------|---------|
| | rpm | lb | kg | in | mm | scfm | l/s | | |
| 0.3 hp (0.22 kW) – Lever Throttle – 200 Series Collet | | | | | | | | | |
| SDG03S25 | 25000 | 1.0 | 0.45 | 6.25 | 160 | 11 | 5.2 | 1/4" | Rear |
| SDG03S25M6 | 25000 | 1.0 | 0.45 | 6.25 | 160 | 11 | 5.2 | 6 mm | Rear |
| 0.3 hp (0.22 kW) – Lever Throttle – 300 Series Collet | | | | | | | | | |
| SDG03S25S | 25000 | 1.0 | 0.45 | 6.25 | 160 | 11 | 5.2 | 1/4" | Rear |
| SDG03S25M6S | 25000 | 1.0 | 0.45 | 6.25 | 160 | 11 | 5.2 | 6mm | Rear |
| 0.5 hp (0.37 kW) – Lever Throttle – 200 Series Collet | | | | | | | | | |
| SDG05S18 | 18000 | 1.2 | 0.54 | 7.0 | 180 | 23 | 10.9 | 1/4" | Rear |
| SDG05S18M6 | 18000 | 1.2 | 0.54 | 7.0 | 180 | 23 | 10.9 | 6 mm | Rear |
| SDG05S23 | 23000 | 1.2 | 0.54 | 7.0 | 180 | 23 | 10.9 | 1/4" | Rear |
| SDG05S23M6 | 23000 | 1.2 | 0.54 | 7.0 | 180 | 23 | 10.9 | 6 mm | Rear |
| 0.5 hp (0.37 kW) – Lever Throttle – 300 Series Collet | | | | | | | | | |
| SDG05S18S | 18000 | 1.2 | 0.54 | 7.0 | 180 | 23 | 10.9 | 1/4" | Rear |
| SDG05S18M6S | 18000 | 1.2 | 0.54 | 7.0 | 180 | 23 | 10.9 | 6mm | Rear |
| SDG05S23S | 23000 | 1.2 | 0.54 | 7.0 | 180 | 23 | 10.9 | 1/4" | Rear |
| SDG05S23M6S | 23000 | 1.2 | 0.54 | 7.0 | 180 | 23 | 10.9 | 6mm | Rear |
| 0.7 hp (0.52 kW) – Lever Throttle – 200 Series Collet | | | | | | | | | |
| SDG7S18F | 18000 | 1.2 | 0.6 | 6.0 | 150 | 25 | 12 | 1/4" | Front |
| SDG7S18M6F | 18000 | 1.2 | 0.6 | 6.0 | 150 | 25 | 12 | 6 mm | Front |
| SDG7S25F | 25000 | 1.2 | 0.6 | 6.0 | 150 | 25 | 12 | 1/4" | Front |
| SDG7S25M6F | 25000 | 1.2 | 0.6 | 6.0 | 150 | 25 | 12 | 6 mm | Front |
| 0.7 hp (0.52 kW) – Lever Throttle – 300 Series Collet | | | | | | | | | |
| SDG7S18FS | 18000 | 1.2 | 0.6 | 6.0 | 150 | 25 | 12 | 1/4" | Front |
| SDG7S25FS | 25000 | 1.2 | 0.6 | 6.0 | 150 | 25 | 12 | 1/4" | Front |
| 1 hp (0.75 kW) – Lever Throttle – 200 Series Collet | | | | | | | | | |
| SDG10S12F | 12000 | 1.7 | 0.8 | 7.5 | 190 | 30 | 14 | 1/4" | Front |
| SDG10S12M6F | 12000 | 1.7 | 0.8 | 7.5 | 190 | 30 | 14 | 6 mm | Front |
| SDG10S12R | 12000 | 1.7 | 0.8 | 7.5 | 190 | 30 | 14 | 1/4" | Rear |
| SDG10S12M6R | 12000 | 1.7 | 0.8 | 7.5 | 190 | 30 | 14 | 6 mm | Rear |
| SDG10S18F | 18000 | 1.7 | 0.8 | 7.5 | 190 | 30 | 14 | 1/4" | Front |
| SDG10S18M6F | 18000 | 1.7 | 0.8 | 7.5 | 190 | 30 | 14 | 6 mm | Front |
| SDG10S18R | 18000 | 1.7 | 0.8 | 7.5 | 190 | 30 | 14 | 1/4" | Rear |
| SDG10S18M6R | 18000 | 1.7 | 0.8 | 7.5 | 190 | 30 | 14 | 6 mm | Rear |
| SDG10S25F | 25000 | 1.7 | 0.8 | 7.5 | 190 | 30 | 14 | 1/4" | Front |
| SDG10S25M6F | 25000 | 1.7 | 0.8 | 7.5 | 190 | 30 | 14 | 6 mm | Front |
| SDG10S25R | 25000 | 1.7 | 0.8 | 7.5 | 190 | 30 | 14 | 1/4" | Rear |
| SDG10S25M6R | 25000 | 1.7 | 0.8 | 7.5 | 190 | 30 | 14 | 6 mm | Rear |

General: Air Inlet Size: 1/4" NPT • Recommended Hose Size: 3/8" (10 mm) • Performance rated @ 90 psig (6.2 bar) air pressure

Standard Equipment: Parts List • Safety and Instruction Manual • Collet & Wrenches • Collet Guard (1DS series)

Accessories: Grinder Accessories, see page 58



SAFETY PRECAUTION: Read and follow all safety and operating instructions.

WARNING: Face & eye protection must be worn while operating power tools, per ANSI B186.1

STRAIGHT DIE GRINDERS



SDGS1S18



SDGS1S18G

Performance:

Power: 1 hp (0.75 kW)
Speed: 12,000 rpm – 25,000 rpm
Collet Size: 1/4" & 6 mm

Features:

Lockoff Lever
Front Exhaust
Built-in Speed Control

Straight Metal Body Die Grinders



| Model Number | Free Speed | Weight | | Length | | Air Consumption | | Collet Size | Exhaust |
|--|------------|--------|-----|--------|-----|-----------------|-----|-------------|---------|
| | rpm | lb | kg | in | mm | scfm | l/s | | |
| 1 hp (0.75 kW) – Lever Throttle – Aluminum Housing | | | | | | | | | |
| SDGA1S12 | 12000 | 1.5 | 0.7 | 6.9 | 175 | 30 | 14 | 1/4" | Front |
| SDGA1S12M6 | 12000 | 1.5 | 0.7 | 6.9 | 175 | 30 | 14 | 6 mm | Front |
| SDGA1S18 | 18000 | 1.5 | 0.7 | 6.9 | 175 | 30 | 14 | 1/4" | Front |
| SDGA1S18M6 | 18000 | 1.5 | 0.7 | 6.9 | 175 | 30 | 14 | 6 mm | Front |
| SDGA1S25 | 25000 | 1.5 | 0.7 | 6.9 | 175 | 30 | 14 | 1/4" | Front |
| SDGA1S25M6 | 25000 | 1.5 | 0.7 | 6.9 | 175 | 30 | 14 | 6 mm | Front |
| 1 hp (0.75 kW) – Lever Throttle – Aluminum Housing with Grip | | | | | | | | | |
| SDGA1S12G | 12000 | 1.4 | 0.6 | 6.9 | 175 | 30 | 14 | 1/4" | Front |
| SDGA1S12M6G | 12000 | 1.4 | 0.6 | 6.9 | 175 | 30 | 14 | 6 mm | Front |
| SDGA1S18G | 18000 | 1.4 | 0.6 | 6.9 | 175 | 30 | 14 | 1/4" | Front |
| SDGA1S18M6G | 18000 | 1.4 | 0.6 | 6.9 | 175 | 30 | 14 | 6 mm | Front |
| SDGA1S25G | 25000 | 1.4 | 0.6 | 6.9 | 175 | 30 | 14 | 1/4" | Front |
| SDGA1S25M6G | 25000 | 1.4 | 0.6 | 6.9 | 175 | 30 | 14 | 6 mm | Front |
| 1 hp (0.75 kW) – Lever Throttle – Steel Housing | | | | | | | | | |
| SDGS1S12 | 12000 | 2.2 | 1.0 | 6.9 | 175 | 30 | 14 | 1/4" | Front |
| SDGS1S12M6 | 12000 | 2.2 | 1.0 | 6.9 | 175 | 30 | 14 | 6 mm | Front |
| SDGS1S18 | 18000 | 2.2 | 1.0 | 6.9 | 175 | 30 | 14 | 1/4" | Front |
| SDGS1S18M6 | 18000 | 2.2 | 1.0 | 6.9 | 175 | 30 | 14 | 6 mm | Front |
| SDGS1S25 | 25000 | 2.2 | 1.0 | 6.9 | 175 | 30 | 14 | 1/4" | Front |
| SDGS1S25M6 | 25000 | 2.2 | 1.0 | 6.9 | 175 | 30 | 14 | 6 mm | Front |
| 1 hp (0.75 kW) – Lever Throttle – Steel Housing with Grip | | | | | | | | | |
| SDGS1S12G | 12000 | 1.8 | 0.8 | 6.9 | 175 | 30 | 14 | 1/4" | Front |
| SDGS1S12M6G | 12000 | 1.8 | 0.8 | 6.9 | 175 | 30 | 14 | 6 mm | Front |
| SDGS1S18G | 18000 | 1.8 | 0.8 | 6.9 | 175 | 30 | 14 | 1/4" | Front |
| SDGS1S18M6G | 18000 | 1.8 | 0.8 | 6.9 | 175 | 30 | 14 | 6 mm | Front |
| SDGS1S25G | 25000 | 1.8 | 0.8 | 6.9 | 175 | 30 | 14 | 1/4" | Front |
| SDGS1S25M6G | 25000 | 1.8 | 0.8 | 6.9 | 175 | 30 | 14 | 6 mm | Front |

General:

Air Inlet Size: 1/4" NPT • Recommended Hose Size: 3/8" (10 mm) • Performance rated @ 90 psig (6.2 bar) air pressure

Standard Equipment:

Parts List • Safety and Instruction Manual • Collet & Wrenches

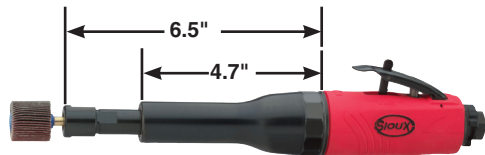
Accessories:

Grinder Accessories, see page 58

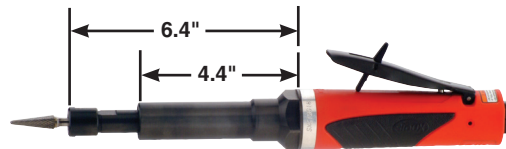


SAFETY PRECAUTION: Read and follow all safety and operating instructions.
WARNING: Face & eye protection must be worn while operating power tools, per ANSI B186.1

EXTENDED DIE GRINDERS



SXG05S23



STXG10S23

Performance:

Power: 0.5 hp (0.37 kW) – 1 hp (0.75 kW)
Speed: 12,000 rpm – 23,000 rpm
Collet Size: 1/4" (6 mm)

Features:

Heavy duty double tapered collet
Ergonomic comfort grip
Teasing throttle for maximum control
Lever throttle with lock-off
Ball bearing construction
Adjustable speed control

Extended Die Grinders



| Model Number | Free Speed | Weight | | Length | | Air Consumption | | Collet Size | Exhaust |
|--|------------|--------|------|--------|-----|-----------------|------|--------------------|---------|
| | rpm | lb | kg | in | mm | scfm | l/s | | |
| 0.5 hp (0.37 kW) – Lever Throttle – Extended – 200 Series Collet | | | | | | | | | |
| SXG05S18 | 18000 | 2.1 | 0.95 | 11.0 | 280 | 23 | 10.9 | 1/4" | Rear |
| SXG05S18M6 | 18000 | 2.1 | 0.95 | 11.0 | 280 | 23 | 10.9 | 6 mm | Rear |
| SXG05S23 | 23000 | 2.1 | 0.95 | 11.0 | 280 | 23 | 10.9 | 1/4" | Rear |
| SXG05S23M6 | 23000 | 2.1 | 0.95 | 11.0 | 280 | 23 | 10.9 | 6 mm | Rear |
| 0.5 hp (0.37 kW) – Extended Die Grinder Lever Throttle – 300 Series Collet | | | | | | | | | |
| SXG05S18S | 18000 | 2.1 | 0.95 | 11.0 | 280 | 23 | 10.9 | 1/4" | Rear |
| SXG05S18M6S | 18000 | 2.1 | 0.95 | 11.0 | 280 | 23 | 10.9 | 6mm | Rear |
| SXG05S23S | 23000 | 2.1 | 0.95 | 11.0 | 280 | 23 | 10.9 | 1/4" | Rear |
| SXG05S23M6S | 23000 | 2.1 | 0.95 | 11.0 | 280 | 23 | 10.9 | 6mm | Rear |
| 1 hp (0.75 kW) – Lever Throttle – Extended – 200 Series Collet | | | | | | | | | |
| STXG10S12 | 12000 | 2.2 | 1.0 | 12.1 | 308 | 30 | 14 | 1/4" | Rear |
| STXG10S12M6 | 12000 | 2.2 | 1.0 | 12.1 | 308 | 30 | 14 | 6 mm | Rear |
| STXG10S18 | 18000 | 2.2 | 1.0 | 12.1 | 308 | 30 | 14 | 1/4" | Rear |
| STXG10S18M6 | 18000 | 2.2 | 1.0 | 12.1 | 308 | 30 | 14 | 6 mm | Rear |
| STXG10S23 | 23000 | 2.2 | 1.0 | 12.1 | 308 | 30 | 14 | 1/4" | Rear |
| STXG10S23M6 | 23000 | 2.2 | 1.0 | 12.1 | 308 | 30 | 14 | 6 mm | Rear |
| 1 hp (0.75 kW) – Lever Throttle – Extended – Cone Wheel | | | | | | | | | |
| STXG10S18CW | 18000 | 2.2 | 1.0 | 12.2 | 310 | 30 | 14 | 3/8"-24 EXT Thread | Rear |

General:

Air Inlet Size: 1/4" NPT • Recommended Hose Size: 3/8" (10 mm) • Performance rated @ 90 psig (6.2 bar) air pressure

Standard Equipment:

Parts List • Safety and Instruction Manual • Collet & Wrenches

Accessories:

Grinder Accessories, see page 58

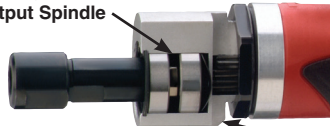


SAFETY PRECAUTION: Read and follow all safety and operating instructions.

WARNING: Face & eye protection must be worn while operating power tools, per ANSI B186.1

HIGH TORQUE DIE GRINDERS

Double Ball Bearing
Support On Output Spindle



Offset Gear Box For
Increased Torque



SDG10SHT08



SDG10SHT12

High Torque Die Grinders



| Model Number | Free Speed | Weight | | Length | | Air Consumption | | Collet Size | Exhaust |
|---|------------|--------|------|--------|-----|-----------------|------|-------------|---------|
| | rpm | lb | kg | in | mm | scfm | l/s | | |
| 1 hp (0.75 kW) – Lever Throttle – High Torque | | | | | | | | | |
| SDG10SHT08 | 8000 | 2.0 | 0.90 | 9.5 | 240 | 35 | 16.5 | 1/4" | Rear |
| SDG10SHT08M6 | 8000 | 2.0 | 0.90 | 9.5 | 240 | 35 | 16.5 | 6 mm | Rear |
| SDG10SHT12 | 12000 | 2.0 | 0.90 | 9.5 | 240 | 35 | 16.5 | 1/4" | Rear |
| SDG10SHT12M6 | 12000 | 2.0 | 0.90 | 9.5 | 240 | 35 | 16.5 | 6 mm | Rear |

General:

Air Inlet Size: 1/4" NPT • Recommended Hose Size: 3/8" (10 mm) • Performance rated @ 90 psig (6.2 bar) air pressure

Standard Equipment:

Parts List • Safety and Instruction Manual • Collet & Wrenches

Accessories:

Grinder Accessories, see page 58

STRAIGHT DIE GRINDERS



RT1985

Performance:

Power: 1.5 hp (1.1 kW)
Speed: 20,000 rpm
Collet Size: 1/4" – 1/2" & 6 mm

Features:

Twist Throttle
Side Exhaust
Built-in Speed Control

Straight Die Grinders



| Model Number | Free Speed | Weight | | Length | | Air Consumption | | Collet Size | Exhaust |
|----------------------------------|------------|--------|-----|--------|-----|-----------------|-----|-------------|---------|
| | rpm | lb | kg | in | mm | scfm | l/s | | |
| 1.5 hp (1.1 kW) – Twist Throttle | | | | | | | | | |
| RT1985 ¹ | 20000 | 4.3 | 2.0 | 7.6 | 193 | 38 | 18 | 1/4" | Side |
| 1985-1/2 | 20000 | 4.3 | 2.0 | 7.6 | 193 | 38 | 18 | 1/2" | Side |
| 1985A | 20000 | 4.3 | 2.0 | 7.6 | 193 | 38 | 18 | 3/8" | Side |

¹Not CE Certified

General:

Air Inlet Size: 1/4" NPT • Recommended Hose Size: 3/8" (10 mm) • Performance rated @ 90 psig (6.2 bar) air pressure

Standard Equipment:

Parts List • Safety and Instruction Manual • Collet & Wrenches • Collet Guard (1DS series)

Accessories:

Grinder Accessories, see page 58



SAFETY PRECAUTION: Read and follow all safety and operating instructions.

WARNING: Face & eye protection must be worn while operating power tools, per ANSI B186.1

RIGHT ANGLE DIE GRINDERS

Performance:

Power: 0.3 hp (0.22 kW) – 1 hp (0.75 kW)
Speed: 3,300 rpm – 23,000 rpm
Collet Size: 1/4" & 6 mm

Features:

Spiral Bevel Gears
Steel Angle Head
Built-in Speed Control

Right Angle Die Grinders



| Model Number | Free Speed | Weight | | Length | | Air Consumption | | Collet Size | Exhaust |
|--|------------|--------|------|--------|-----|-----------------|------|-------------|---------|
| | rpm | lb | kg | in | mm | scfm | l/s | | |
| 0.3 hp (0.22 kW) – Lever Throttle – 200 Series Collet | | | | | | | | | |
| SAG03S12 | 12000 | 1.4 | 0.6 | 5.6 | 140 | 11 | 5.2 | 1/4" | Rear |
| SAG03S12M6 | 12000 | 1.4 | 0.6 | 5.6 | 140 | 11 | 5.2 | 6 mm | Rear |
| SAG03S20 | 20000 | 1.4 | 0.6 | 5.6 | 140 | 11 | 5.2 | 1/4" | Rear |
| SAG03S20M6 | 20000 | 1.4 | 0.6 | 5.6 | 140 | 11 | 5.2 | 6 mm | Rear |
| 0.3 hp (0.22 kW) – Lever Throttle – 300 Series Collet | | | | | | | | | |
| SAG03S12S | 12000 | 1.35 | 0.45 | 5.6 | 143 | 11 | 5.2 | 1/4" | Rear |
| SAG03S12M6S | 12000 | 1.35 | 0.45 | 5.6 | 143 | 11 | 5.2 | 6mm | Rear |
| SAG03S20S | 20000 | 1.35 | 0.45 | 5.6 | 143 | 11 | 5.2 | 1/4" | Rear |
| SAG03S20M6S | 20000 | 1.35 | 0.45 | 5.6 | 143 | 11 | 5.2 | 6mm | Rear |
| 0.5 hp (0.37 kW) – Lever Throttle – 200 Series Collet | | | | | | | | | |
| SAG05S33 | 3300 | 2.2 | 1.0 | 8.2 | 208 | 23 | 11 | 1/4" | Rear |
| SAG05S54 | 5400 | 2.2 | 1.0 | 8.2 | 208 | 23 | 11 | 1/4" | Rear |
| SAG05S12 | 12000 | 1.7 | 0.77 | 6.9 | 175 | 23 | 11 | 1/4" | Rear |
| SAG05S12M6 | 12000 | 1.7 | 0.77 | 6.9 | 175 | 23 | 11 | 6 mm | Rear |
| SAG05S15 | 15000 | 1.7 | 0.77 | 6.9 | 175 | 23 | 11 | 1/4" | Rear |
| SAG05S15M6 | 15000 | 1.7 | 0.77 | 6.9 | 175 | 23 | 11 | 6mm | Rear |
| SAG05S18 | 18000 | 1.7 | 0.77 | 6.9 | 175 | 23 | 11 | 1/4" | Rear |
| SAG05S18M6 | 18000 | 1.7 | 0.77 | 6.9 | 175 | 23 | 11 | 6mm | Rear |
| SAG05S23 | 23000 | 1.6 | 0.64 | 6.4 | 160 | 23 | 10.8 | 1/4" | Rear |
| SAG05S23M6 | 23000 | 1.6 | 0.64 | 6.4 | 160 | 23 | 10.8 | 6 mm | Rear |
| 0.5 hp (0.37 kW) – Lever Throttle – 300 Series Collet | | | | | | | | | |
| SAG05S12S | 12000 | 1.65 | 0.77 | 6.9 | 175 | 23 | 11 | 1/4" | Rear |
| SAG05S12M6S | 12000 | 1.65 | 0.77 | 6.9 | 175 | 23 | 11 | 6 mm | Rear |
| SAG05S15S | 15000 | 1.65 | 0.77 | 6.9 | 175 | 23 | 11 | 1/4" | Rear |
| SAG05S15M6S | 15000 | 1.65 | 0.77 | 6.9 | 175 | 23 | 11 | 6mm | Rear |
| SAG05S18S | 18000 | 1.65 | 0.77 | 6.9 | 175 | 23 | 11 | 1/4" | Rear |
| SAG05S18M6S | 18000 | 1.65 | 0.77 | 6.9 | 175 | 23 | 11 | 6mm | Rear |
| SAG05S23S | 23000 | 1.55 | 0.61 | 6.4 | 162 | 23 | 10.8 | 1/4" | Rear |
| SAG05S23M6S | 23000 | 1.55 | 0.61 | 6.4 | 162 | 23 | 10.8 | 6mm | Rear |
| 0.70 hp (0.52 kW) – Lever Throttle – 200 Series Collet | | | | | | | | | |
| SAG7S12 | 12000 | 2.0 | 0.90 | 6.5 | 165 | 25 | 12 | 1/4" | Front |
| SAG7S12M6 | 12000 | 2.0 | 0.90 | 6.5 | 165 | 25 | 12 | 6mm | Front |
| SAG7S15 | 15000 | 2.0 | 0.90 | 6.5 | 165 | 25 | 12 | 1/4" | Front |
| SAG7S15M6 | 15000 | 2.0 | 0.90 | 6.5 | 165 | 25 | 12 | 6mm | Front |
| SAG7S18 | 18000 | 2.0 | 0.90 | 6.5 | 165 | 25 | 12 | 1/4" | Front |
| SAG7S18M6 | 18000 | 2.0 | 0.90 | 6.5 | 165 | 25 | 12 | 6mm | Front |
| 1 hp (0.75 kW) – Lever Throttle – 200 Series Collet | | | | | | | | | |
| SAG10S12 | 12000 | 2.7 | 1.2 | 9.0 | 230 | 30 | 14 | 1/4" | Rear |
| SAG10S12M6 | 12000 | 2.7 | 1.2 | 9.0 | 230 | 30 | 14 | 6 mm | Rear |
| SAG10S15 | 15000 | 2.7 | 1.2 | 9.0 | 230 | 30 | 14 | 1/4" | Rear |
| SAG10S15M6 | 15000 | 2.7 | 1.2 | 9.0 | 230 | 30 | 14 | 6 mm | Rear |
| SAG10S18 | 18000 | 2.7 | 1.2 | 9.0 | 230 | 30 | 14 | 1/4" | Rear |
| SAG10S18M6 | 18000 | 2.7 | 1.2 | 9.0 | 230 | 30 | 14 | 6 mm | Rear |

General: Air Inlet Size: 1/4" NPT • Recommended Hose Size: 3/8" (10 mm) • Performance rated @ 90 psig (6.2 bar) air pressure

Standard Equipment: Parts List • Safety and Instruction Manual • Collet, Support Handle (1 HP only) & Wrenches

Accessories: Grinder Accessories, see page 58



RIGHT ANGLE EXTENDED DIE GRINDERS



SAG7AX20



SAG10AX12

2.9"



SAGA1AX12

2.75"



SAGA1AX12G

Performance:

Power: 0.7 hp (0.52 kW) – 1 hp (0.75 kW)
Speed: 12,000 rpm – 20,000 rpm
Collet Size: 1/4" & 6 mm

Features:

Steel Angle Head
Spiral Bevel Gears
200 Series Collet
Built-in Speed Control

Right Angle Extended Die Grinders



| Model Number | Free Speed | Weight | | Length | | Air Consumption | | Collet Size | Exhaust |
|---|------------|--------|------|--------|-----|-----------------|------|-------------|---------|
| | rpm | lb | kg | in | mm | scfm | l/s | | |
| 0.7 hp (0.52 kW) – Aluminum Housing | | | | | | | | | |
| SAG7AX13 | 13000 | 2.9 | 1.3 | 10.0 | 254 | 25 | 12 | 1/4" | Front |
| SAG7AX13M6 | 13000 | 2.9 | 1.3 | 10.0 | 254 | 25 | 12 | 6 mm | Front |
| SAG7AX16 | 16000 | 2.9 | 1.3 | 10.0 | 254 | 25 | 12 | 1/4" | Front |
| SAG7AX16M6 | 16000 | 2.9 | 1.3 | 10.0 | 254 | 25 | 12 | 6 mm | Front |
| SAG7AX20 | 20000 | 2.9 | 1.3 | 10.0 | 254 | 25 | 12 | 1/4" | Front |
| SAG7AX20M6 | 20000 | 2.9 | 1.3 | 10.0 | 254 | 25 | 12 | 6 mm | Front |
| 1 hp (0.75 kW) – Composite Comfort Housing | | | | | | | | | |
| SAG10AX12 | 12000 | 3.20 | 1.45 | 11.25 | 286 | 30 | 14.2 | 1/4" | Rear |
| SAG10AX12M6 | 12000 | 3.20 | 1.45 | 11.25 | 286 | 30 | 14.2 | 6mm | Rear |
| SAG10AX15 | 15000 | 3.20 | 1.45 | 11.25 | 286 | 30 | 14.2 | 1/4" | Rear |
| SAG10AX15M6 | 15000 | 3.20 | 1.45 | 11.25 | 286 | 30 | 14.2 | 6mm | Rear |
| SAG10AX18 | 18000 | 3.20 | 1.45 | 11.25 | 286 | 30 | 14.2 | 1/4" | Rear |
| SAG10AX18M6 | 18000 | 3.20 | 1.45 | 11.25 | 286 | 30 | 14.2 | 6mm | Rear |
| 1 hp (0.75 kW) – Aluminum Housing | | | | | | | | | |
| SAGA1AX12 | 12000 | 3.2 | 1.5 | 10.5 | 267 | 30 | 14.2 | 1/4" | Front |
| SAGA1AX12M6 | 12000 | 3.2 | 1.5 | 10.5 | 267 | 30 | 14.2 | 6mm | Front |
| SAGA1AX18 | 18000 | 3.2 | 1.5 | 10.5 | 267 | 30 | 14.2 | 1/4" | Front |
| SAGA1AX18M6 | 18000 | 3.2 | 1.5 | 10.5 | 267 | 30 | 14.2 | 6mm | Front |
| 1 hp (0.75 kW) – Aluminum Housing with Grip | | | | | | | | | |
| SAGA1AX12G | 12000 | 2.9 | 1.3 | 10.5 | 267 | 30 | 14.2 | 1/4" | Front |
| SAGA1AX12M6G | 12000 | 2.9 | 1.3 | 10.5 | 267 | 30 | 14.2 | 6mm | Front |
| SAGA1AX18G | 18000 | 2.9 | 1.3 | 10.5 | 267 | 30 | 14.2 | 1/4" | Front |
| SAGA1AX18M6G | 18000 | 2.9 | 1.3 | 10.5 | 267 | 30 | 14.2 | 6mm | Front |

General: Air Inlet Size: 1/4" NPT • Recommended Hose Size: 3/8" (10 mm) • Performance rated @ 90 psig (6.2 bar) air pressure

Standard Equipment: Parts List • Safety and Instruction Manual • Collet • Support Handle • Wrenches

Accessories: Grinder Accessories, see page 58



WARNING



SAFETY PRECAUTION: Read and follow all safety and operating instructions.

WARNING: Face & eye protection must be worn while operating power tools, per ANSI B186.1

RIGHT ANGLE TYPE 27 WHEEL GRINDERS



SWG05S183



SWG10A1245

Performance:

Power: 0.5 hp (0.37 kW) – 1 hp (0.75 kW)

Speed: 12,000 rpm – 18,000 rpm

Wheel Capacity: 3" (75 mm) –
6" (150 mm) diameter

Features:

Non-Governed

Lockoff Lever Throttle

Rear Exhaust



SWG10S183



SWG10S1245

Right Angle Type 27 Wheel Grinders



| Model Number | Free Speed | Wheel Capacity | | Weight | | Length | | Air Consumption | | Spindle Thread |
|---|------------|----------------|-----|--------|------|--------|-----|-----------------|-----|----------------|
| | rpm | in | mm | lb | kg | in | mm | scfm | l/s | |
| 0.5 hp (0.37 kW) | | | | | | | | | | |
| SWG05S183 | 18000 | 3.0 | 75 | 2.0 | 0.91 | 7.0 | 178 | 23 | 11 | 3/8"-24 |
| 0.7 hp (0.52 kW) | | | | | | | | | | |
| SWG7S183 | 18000 | 3.0 | 75 | 2.1 | 0.95 | 6.4 | 163 | 25 | 12 | 3/8"-24 |
| 1 hp (0.75 kW) – Medium Duty Angle Head | | | | | | | | | | |
| SWG10A124 | 12000 | 4.0 | 100 | 2.5 | 1.1 | 7.75 | 195 | 35 | 17 | 3/8" - 24 |
| SWG10A1245 | 12000 | 4.5 | 115 | 2.6 | 1.17 | 7.75 | 195 | 35 | 17 | 5/8"-11 |
| SWG10A125 | 12000 | 5.0 | 125 | 2.7 | 1.22 | 7.75 | 195 | 35 | 17 | 5/8" - 11 |
| SWG10S183 | 18000 | 3.0 | 75 | 2.5 | 1.1 | 7.5 | 190 | 35 | 17 | 3/8"-24 |
| 1 hp (0.75 kW) – Heavy Duty Angle Head | | | | | | | | | | |
| SWG10S124 | 12000 | 4.0 | 100 | 3.3 | 1.5 | 8.3 | 210 | 35 | 17 | 3/8"-24 |
| SWG10S1245 | 12000 | 4.5 | 115 | 3.3 | 1.5 | 8.3 | 210 | 35 | 17 | 5/8"-11 |
| SWG10S125 | 12000 | 5.0 | 125 | 3.4 | 1.5 | 8.3 | 210 | 35 | 17 | 5/8"-11 |
| SWG10S106 | 10000 | 6.0 | 150 | 3.7 | 1.7 | 8.3 | 210 | 35 | 17 | 5/8"-11 |

General: Air Inlet Size: 1/4" NPT • Recommended Hose Size: 3/8" (10 mm) • Performance rated @ 90 psig (6.2 bar) air pressure

Standard Equipment: Parts List • Safety and Instruction Manual • Spindle Wrenches • Wheel Guard • Support Handle • Mounting Flange & Nut

Accessories: Grinder Accessories, see page 58

EXTENDED TYPE 27 WHEEL GRINDERS



SWG7AX1345



SWG10AX124



SWG10AXL124



SWG10SX1245



SWGS1AX124

Performance:

Power: 0.7 hp (0.52 kW) – 1 hp (0.75 kW)

Speed: 12,000 rpm – 20,000 rpm

Wheel Capacity: 3" (75 mm) – 5" (127 mm)

Features:

Non-Governed

Lockoff Lever

Adjustable Guard



SWGS1AX124G

Right Angle Type 27 Extended Wheel Grinders



| Model Number | Free Speed | Wheel Capacity | | Weight | | Length | | Air Consumption | | Spindle Thread | Exhaust |
|---|------------|----------------|-----|--------|------|--------|-----|-----------------|-----|----------------|---------|
| | rpm | in | mm | lb | kg | in | mm | scfm | l/s | | |
| 0.7 hp (0.52 kW) – Aluminum Housing | | | | | | | | | | | |
| SWG7AX134 | 13300 | 4.0 | 100 | 3.5 | 1.6 | 10.0 | 254 | 25 | 12 | 3/8" - 24 | Front |
| SWG7AX1345 | 13300 | 4.5 | 115 | 3.5 | 1.6 | 10.0 | 254 | 25 | 12 | 5/8" - 11 | Front |
| SWG7AX203 | 20000 | 3.0 | 75 | 3.5 | 1.6 | 10.0 | 254 | 25 | 12 | 3/8" - 24 | Front |
| 1 hp (0.75 kW) – Comfort Grip | | | | | | | | | | | |
| SWG10AX124 | 12000 | 4.0 | 100 | 3.6 | 1.63 | 11.25 | 285 | 35 | 17 | 3/8" - 24 | Rear |
| SWG10AXL124 | 12000 | 4.0 | 100 | 3.5 | 1.59 | 11.25 | 285 | 35 | 17 | 3/8" - 24 | Rear |
| SWG10AX1245 | 12000 | 4.5 | 115 | 3.7 | 1.68 | 11.25 | 285 | 35 | 17 | 5/8" - 11 | Rear |
| SWG10AX125 | 12000 | 5.0 | 125 | 3.8 | 1.72 | 11.25 | 285 | 35 | 17 | 5/8" - 11 | Rear |
| 1 hp (0.75 kW) – Heavy Duty Angle Head – Comfort Grip | | | | | | | | | | | |
| SWG10SX124 | 12000 | 4.0 | 100 | 4.2 | 1.9 | 11.7 | 300 | 35 | 17 | 3/8"-24 | Rear |
| SWG10SX1245 | 12000 | 4.5 | 115 | 4.3 | 2.0 | 11.7 | 300 | 35 | 17 | 5/8"-11 | Rear |
| SWG10SX125 | 12000 | 5.0 | 125 | 4.3 | 2.0 | 11.7 | 300 | 35 | 17 | 5/8"-11 | Rear |
| 1 hp (0.75 kW) – Aluminum Housing | | | | | | | | | | | |
| SWGA1AX124 | 12000 | 4.0 | 100 | 3.3 | 1.5 | 10.5 | 267 | 35 | 17 | 3/8" - 24 | Front |
| SWGA1AX1245 | 12000 | 4.5 | 115 | 3.4 | 1.5 | 10.5 | 267 | 35 | 17 | 5/8" - 11 | Front |
| 1 hp (0.75 kW) – Aluminum Housing with Grip | | | | | | | | | | | |
| SWGA1AX124G | 12000 | 4.0 | 100 | 3.2 | 1.5 | 10.5 | 267 | 35 | 17 | 3/8" - 24 | Front |
| SWGA1AX1245G | 12000 | 4.5 | 115 | 3.3 | 1.5 | 10.5 | 267 | 35 | 17 | 5/8" - 11 | Front |
| 1 hp (0.75 kW) – Steel Housing | | | | | | | | | | | |
| SWGS1AX124 | 12000 | 4.0 | 100 | 3.9 | 1.8 | 10.5 | 267 | 35 | 17 | 3/8" - 24 | Front |
| SWGS1AX1245 | 12000 | 4.5 | 115 | 4.0 | 1.8 | 10.5 | 267 | 35 | 17 | 5/8" - 11 | Front |
| 1 hp (0.75 kW) – Steel Housing with Grip | | | | | | | | | | | |
| SWGS1AX124G | 12000 | 4.0 | 100 | 3.7 | 1.7 | 10.5 | 267 | 35 | 17 | 3/8" - 24 | Front |
| SWGS1AX1245G | 12000 | 4.5 | 115 | 3.8 | 1.7 | 10.5 | 267 | 35 | 17 | 5/8" - 11 | Front |

General: 0.7 hp models: Air Inlet Size: 1/4" NPT • Recommended Hose Size: 3/8" (10 mm) • Performance rated @ 90 psig (6.2 bar) air pressure

1 hp models: Air Inlet Size: 3/8" NPT • Recommended Hose Size: 3/8" (10 mm) • Performance rated @ 90 psig (6.2 bar) air pressure

Standard Equipment: Parts List • Safety and Instruction Manual • Spindle Wrenches • Wheel Guard • Support Handle • Mounting Flange & Nut • Grinding Wheel

Accessories: Grinder Accessories, see page 58



SAFETY PRECAUTION: Read and follow all safety and operating instructions.

WARNING: Face & eye protection must be worn while operating power tools, per ANSI B186.1

RIGHT ANGLE TYPE 27 WHEEL GRINDERS



Performance:

Power: 1.2 hp (0.9 kW) – 2.2 hp (1.6 kW)
Speed: 6,000 rpm – 12,000 rpm
Wheel Capacity: 4.5" (115 mm) –
7" (175 mm) diameter

Features:

Governed
Lockoff Lever Throttle
Side Exhaust



Right Angle Type 27 Wheel Grinders

| Model Number | Free Speed | Wheel Capacity | | Weight | | Length | | Air Consumption Under Load | | Air Consumption Free Speed | | Spindle Thread |
|----------------------------------|------------|----------------|-----|--------|-----|--------|-----|----------------------------|-----|----------------------------|-----|----------------|
| | rpm | in | mm | lb | kg | in | mm | scfm | l/s | scfm | l/s | |
| 1.2 hp (0.9 kW) – Governed Speed | | | | | | | | | | | | |
| 1285L ¹ | 6000 | 7.0 | 180 | 6.8 | 3.1 | 12.4 | 315 | 43 | 20 | 22 | 10 | 5/8"-11 |
| 1.6 hp (1.2 kW) – Governed Speed | | | | | | | | | | | | |
| AG16D1245 | 12000 | 4.5 | 115 | 4.3 | 1.9 | 11.0 | 280 | 53 | 25 | 40 | 19 | 5/8"-11 |
| AG16D125 | 12000 | 5.0 | 125 | 4.4 | 2.0 | 11.0 | 280 | 53 | 25 | 40 | 19 | 5/8"-11 |
| AG16D106 | 10000 | 6.0 | 150 | 4.6 | 2.1 | 11.0 | 280 | 53 | 25 | 40 | 19 | 5/8"-11 |
| 2.2 hp (1.6 kW) – Governed Speed | | | | | | | | | | | | |
| AG22D847 | 8400 | 7.0 | 175 | 6.1 | 2.8 | 12.4 | 315 | 60 | 28 | 45 | 21 | 5/8"-11 |

¹Not CE Certified

General: Air Inlet Size: 1/4" NPT (1285L); 3/8" NPT (AG) • Recommended Hose Size: 3/8" (10 mm) (1285L); 1/2" (13mm) (AG)

Performance rated @ 90 psig (6.2 bar) air pressure

Standard Equipment: Parts List • Safety and Instruction Manual • Spindle Wrenches • Wheel Guard • Support Handle • Mounting Flange & Nut

Accessories: Grinder Accessories, see page 58



SAFETY PRECAUTION: Read and follow all safety and operating instructions.

WARNING: Face & eye protection must be worn while operating power tools, per ANSI B186.1

VERTICAL WHEEL GRINDERS



1291



VG40D609



VG40D807



VG40C606



VG50D807



VG50D609



VG50C606

Performance:

Power: 1.2 hp (0.9 kW) – 5 hp (3.7 kW)
 Speed: 5,000 rpm – 8,000
 Diameter: 6" (150 mm) – 9" (230 mm)

Features:

Governed & Non-Governed
 Lockoff Lever & Thumb Throttle
 Side Exhaust
 5/8"-11 Spindle Thread
 2-Stage Throttle (VG Series)

Vertical Wheel Grinders



| Model Number | Free Speed | Pad Diameter | | Weight | | Height | | Air Consumption Under Load | | Air Consumption Free Speed | |
|--|------------|--------------|-----|--------|-----|--------|-----|----------------------------|-----|----------------------------|-----|
| | rpm | in | mm | lb | kg | in | mm | scfm | l/s | scfm | l/s |
| 1.2 hp (0.9 kW) – Type 27 – Non-Governed Speed – Thumb Throttle | | | | | | | | | | | |
| 1291 | 5000 | 7.0 | 175 | 5.0 | 2.3 | 7.2 | 183 | N/A | N/A | 38 | 18 |
| 1.2 hp (0.9 kW) – Type 27 – Non-Governed Speed – Lever Throttle | | | | | | | | | | | |
| 1291L | 6000 | 7.0 | 175 | 5.0 | 2.3 | 7.2 | 183 | N/A | N/A | 38 | 18 |
| 4 hp (2.9 kW) – Type 27 – Governed Speed | | | | | | | | | | | |
| VG40D607 | 6000 | 7.0 | 175 | 9.4 | 4.3 | 7.7 | 195 | 70 | 33 | 40 | 19 |
| VG40D807 | 8000 | 7.0 | 175 | 9.4 | 4.3 | 7.7 | 195 | 70 | 33 | 40 | 19 |
| VG40D609 | 6000 | 9.0 | 230 | 10.4 | 4.7 | 7.7 | 195 | 70 | 33 | 40 | 19 |
| 5 hp (3.7 kW) – Type 27 – Governed Speed | | | | | | | | | | | |
| VG50D607 | 6000 | 7.0 | 175 | 11.2 | 5.1 | 8.4 | 215 | 96 | 45 | 55 | 26 |
| VG50D807 | 8000 | 7.0 | 175 | 11.2 | 5.1 | 8.4 | 215 | 96 | 45 | 55 | 26 |
| VG50D609 | 6000 | 9.0 | 230 | 12.2 | 5.5 | 8.4 | 215 | 96 | 45 | 55 | 26 |
| 4 hp (2.9 kW) – Type 6 & 11 – Governed Speed | | | | | | | | | | | |
| VG40C606 | 6000 | 6.0 | 150 | 10.5 | 4.8 | 8.0 | 205 | 70 | 33 | 40 | 19 |
| 5 hp (3.7 kW) – Type 6 & 11 – Governed Speed | | | | | | | | | | | |
| VG50C606 | 6000 | 6.0 | 150 | 12.3 | 5.6 | 8.7 | 220 | 96 | 45 | 55 | 26 |

General: Air Inlet Size: 1/2" NPT • Recommended Hose Size: 3/8" (10 mm) (1291, 1291L); 3/4" (19 mm) (VG Series) • Performance rated @ 90 psig (6.2 bar) air pressure

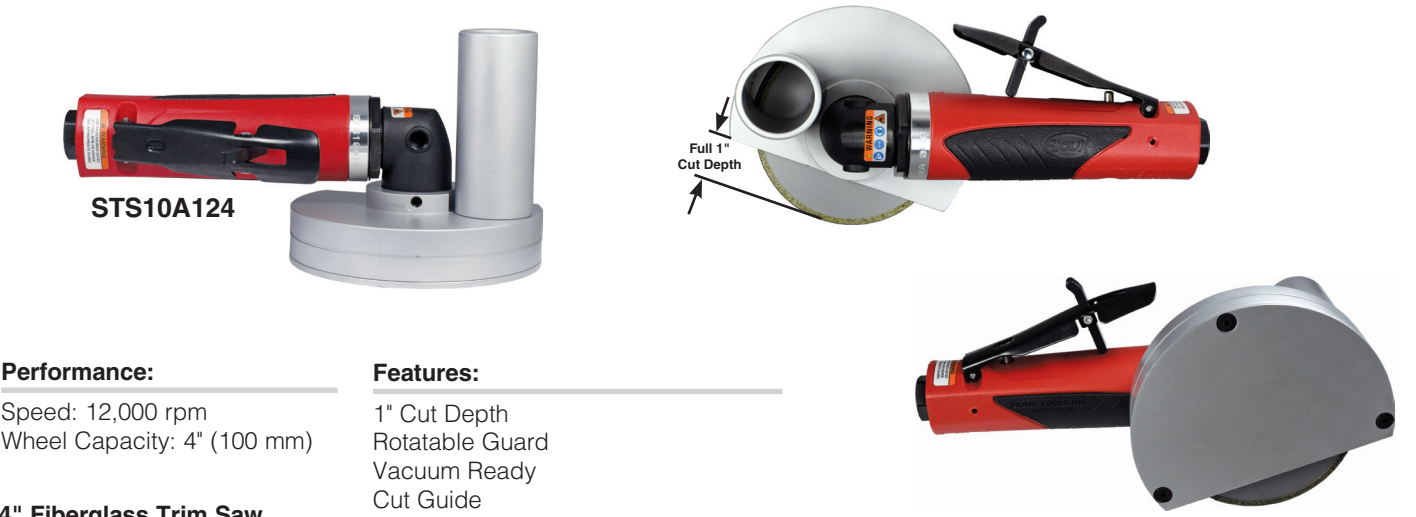
Standard Equipment: Parts List • Safety and Instruction Manual • Spindle Wrenches • Wheel Guard • Mounting Flange & Nut • Grinding Wheel (1291, 1291L)

Accessories: Grinder Accessories, see page 58



SAFETY PRECAUTION: Read and follow all safety and operating instructions.

WARNING: Face & eye protection must be worn while operating power tools, per ANSI B186.1



Performance:
 Speed: 12,000 rpm
 Wheel Capacity: 4" (100 mm)

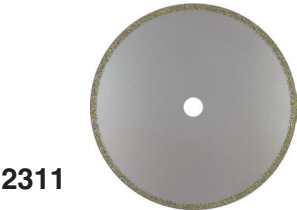
Features:
 1" Cut Depth
 Rotatable Guard
 Vacuum Ready
 Cut Guide

4" Fiberglass Trim Saw

| Model Number | Wheel Capacity | | Free Speed | Weight | | Length | | Air Consumption | | Spindle Thread | Exhaust |
|--------------|----------------|-----|------------|--------|-----|--------|-----|-----------------|-----|----------------|---------|
| | in | mm | | lb | kg | in | mm | scfm | l/s | | |
| STS10A124 | 4 | 100 | 12000 | 3.25 | 1.5 | 9.5 | 240 | 35 | 17 | 3/8"-24 | Rear |

General: Air Inlet Size: 1/4" NPT • Recommended Hose Size: 3/8" (10 mm) • Performance rated @ 90 psig (6.2 bar) air pressure
Standard Equipment: Parts List • Safety and Instruction Manual • 4" Diamond-Coated Blades Sold Separately
Accessories: Material Removal Tool Accessories, see page 58

DIAMOND BLADE



| Part Number | Description |
|-------------|--|
| 2311 | 4" Continuous-Rim Diamond Blade with 3/8" arbor hole |

MATERIAL REMOVAL TOOL



SMR05S354



Performance:

Power: 0.5 hp (0.37 kW)
Speed: 3,500 rpm

Features:

Removable Support Handle
Lockoff Lever
Planetary Gear for Increased Torque

Material Removal Tool

| Model Number | Free Speed | Weight | | Length | | Air Consumption | | Exhaust |
|--------------|------------|--------|------|--------|-------|-----------------|-----|---------|
| | rpm | lb | kg | in | mm | scfm | l/s | |
| SMR05S354 | 3500 | 2.4 | 1.08 | 12.0 | 304.8 | 28 | 132 | Rear |

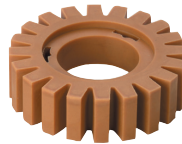
General: Air Inlet Size: 1/4" NPT • Recommended Hose Size: 3/8" (10 mm) • Performance rated @ 90 psig (6.2 bar) air pressure

Standard Equipment: Parts List • Safety and Instruction Manual • Fine Belt (68813) • Coarse Belt (68814) • Eraser (68815) • Support Handle

Accessories: Panel and Cutoff Saw Accessories, see page 58



Hub Set SPPT280-300



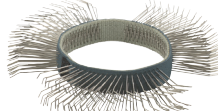
Eraser 68815



Course Wire Belt 68814



Fine Wire Belt 68813



Medium Stainless Steel
Wire Belt 68917



Fine Stainless Steel
Wire Belt 68915

BELTS AND ERASERS

| Part Number | Description |
|-------------|--|
| SPPT280-300 | 11mm Hub Set |
| 68815 | Rubber Eraser |
| 68814 | Course Wire Belt, 23 mm Wide |
| 68910 | Course Wire Belt, 11 mm Wide |
| 68911 | Medium Wire Belt, 23 mm Wide |
| 68912 | Medium Wire Belt, 11 mm Wide |
| 68813 | Fine Wire Belt, 23 mm Wide |
| 68913 | Fine Wire Belt, 11 mm Wide |
| 68916 | Medium Stainless Steel Wire Belt, 23 mm Wide |
| 68917 | Medium Stainless Steel Wire Belt, 11 mm Wide |
| 68914 | Fine Stainless Steel Wire Belt, 23 mm Wide |
| 68915 | Fine Stainless Steel Wire Belt, 11 mm Wide |



SAFETY PRECAUTION: Read and follow all safety and operating instructions.
WARNING: Face & eye protection must be worn while operating power tools, per ANSI B186.1

CUTOFF TOOLS (TYPE 1)

Performance:

Power: 1 hp (0.75 kW)
Free Speed: 18,000 rpm – 25,000 rpm

Features:

Inline
Lockoff Lever Start
Front or Rear Exhaust



SCO10S253F



Cutoff Tool

| Model Number | Blade Diameter | | Depth of Cut | | Free Speed | Weight | | Length | | Air Consumption | | Exhaust |
|---|----------------|-----|--------------|----|------------|--------|-----|--------|-----|-----------------|-----|---------|
| | in | mm | in | mm | rpm | lb | kg | in | mm | scfm | l/s | |
| 1 hp (0.75 kW) – Cutoff Tool – Inline – Lockoff lever Start | | | | | | | | | | | | |
| SCO10S184F | 4.0 | 100 | 1.1 | 28 | 18000 | 2.0 | 0.9 | 8.3 | 210 | 30 | 14 | Front |
| SCO10S184R | 4.0 | 100 | 1.1 | 28 | 18000 | 2.0 | 0.9 | 8.3 | 210 | 30 | 14 | Rear |
| SCO10S204F | 4.0 | 100 | 1.1 | 28 | 20000 | 2.0 | 0.9 | 8.3 | 210 | 30 | 14 | Front |
| SCO10S204R | 4.0 | 100 | 1.1 | 28 | 20000 | 2.0 | 0.9 | 8.3 | 210 | 30 | 14 | Rear |
| SCO10S253F | 3.0 | 76 | 1.0 | 25 | 25000 | 2.0 | 0.9 | 8.3 | 210 | 30 | 14 | Front |
| SCO10S253R | 3.0 | 76 | 1.0 | 25 | 25000 | 2.0 | 0.9 | 8.3 | 210 | 30 | 14 | Rear |

General: Air Inlet Size: 1/4" NPT • Recommended Hose Size: 3/8" (10 mm) • Performance rated @ 90 psig (6.2 bar) air pressure

Standard Equipment: Parts List • Safety and Instruction Manual • 1 Blade • Spindle Wrenches & Guard

Accessories: Cutoff Saw Accessories, see page 58

ANGLE CUTOFF TOOLS (TYPE 1)

Features:

Heavy duty spiral bevel gearing for durability and smooth operation
4 position indexable angle head
360 degree rotatable guard



SCO10A106



Angle Cutoff Tool

| Model Number | Blade Diameter | | Depth of Cut | | Free Speed rpm | Weight | | Length | | Air Consumption | | Spindle Thread | Exhaust |
|--------------|----------------|-----|--------------|----|-------------------|--------|-----|--------|-----|-----------------|-----|----------------|---------|
| | in | mm | in | mm | | lb | kg | in | mm | scfm | l/s | | |
| SCO7A184 | 4.0 | 100 | 1.2 | 30 | 18000 | 2.5 | 1.4 | 6.4 | 163 | 25 | 12 | 3/8"-24 | Front |
| SCO10A106 | 6.0 | 150 | 2.0 | 51 | 10000 | 3.7 | 1.7 | 8.75 | 220 | 35 | 17 | 5/8"-11 | Rear |
| SCO10A125 | 5.0 | 125 | 1.5 | 38 | 12000 | 3.5 | 1.6 | 8.75 | 220 | 35 | 17 | 5/8"-11 | Rear |
| SCO10A184 | 4.0 | 100 | 1.2 | 30 | 18000 | 2.5 | 1.4 | 7.75 | 195 | 35 | 17 | 3/8"-24 | Rear |
| SCO10AXL124 | 4.0 | 100 | 1.0 | 25 | 12000 | 3.6 | 1.6 | 11.25 | 285 | 35 | 17 | 3/8"-24 | Rear |

General: Air Inlet Size: 1/4" NPT • Recommended Hose Size: 3/8" (10 mm) • Performance rated @ 90 psig (6.2 bar) air pressure

Standard Equipment: Parts List • Safety and Instruction Manual • 1 Blade • Spindle Wrenches & Guard

Accessories: Cutoff Tool Accessories, see page 58



SAFETY PRECAUTION: Read and follow all safety and operating instructions.

WARNING: Face & eye protection must be worn while operating power tools, per ANSI B186.1

EXTENDED CUTOFF TOOLS (TYPE 1)



SCOA1AX124



SCOA1AX124G

Performance:

Power: 1 hp (0.75 kW)
Speed: 12,000 rpm
Collet Size: 1/4" & 6 mm

Features:

Lockoff Lever
Robust Steel or Durable Aluminum Housing
Available With Comfort Grip

Angle Extended Cutoff Tool



| Model Number | Blade Diameter | | Depth of Cut | | Free Speed | Weight | | Length | | Air Consumption | | Spindle Thread | Exhaust |
|--|----------------|-----|--------------|----|------------|--------|-----|--------|-----|-----------------|------|----------------|---------|
| | in | mm | in | mm | rpm | lb | kg | in | mm | scfm | l/s | | |
| 1 hp (0.75 kW) – Aluminum Housing | | | | | | | | | | | | | |
| SCOA1AX124 | 4.0 | 100 | 1.0 | 25 | 12000 | 3.9 | 1.8 | 10.5 | 267 | 35 | 16.5 | 3/8" - 24 | Front |
| 1 hp (0.75 kW) – Aluminum Housing with Grip | | | | | | | | | | | | | |
| SCOA1AX124G | 4.0 | 100 | 1.0 | 25 | 12000 | 3.6 | 1.6 | 10.5 | 267 | 35 | 16.5 | 3/8" - 24 | Front |
| 1 hp (0.75 kW) – Steel Housing | | | | | | | | | | | | | |
| SCOS1AX124 | 4.0 | 100 | 1.0 | 25 | 12000 | 4.5 | 2.0 | 10.5 | 267 | 35 | 16.5 | 3/8" - 24 | Front |
| 1 hp (0.75 kW) – Steel Housing with Grip | | | | | | | | | | | | | |
| SCOS1AX124G | 4.0 | 100 | 1.0 | 25 | 12000 | 4.1 | 1.9 | 10.5 | 267 | 35 | 16.5 | 3/8" - 24 | Front |

General: Air Inlet Size: 1/4" NPT • Recommended Hose Size: 3/8" (10 mm) • Performance rated @ 90 psig (6.2 bar) air pressure

Standard Equipment: Parts List • Safety and Instruction Manual • 1 Blade • Spindle Wrenches & Guard

Accessories: Cutoff Tool Accessories, see page 58



WARNING



SAFETY PRECAUTION: Read and follow all safety and operating instructions.

WARNING: Face & eye protection must be worn while operating power tools, per ANSI B186.1

Signature Series Collets



| Part Number | Description |
|-------------|------------------------------|
| 74071 | Collet Nut |
| 74072 | Collet (1/8") |
| 74073 | Collet (3/16") |
| 74074 | Collet (1/4") |
| 68030 | Collet (3/8") |
| 74075 | Collet (3 mm) |
| 74076 | Collet (6 mm) |
| 68056 | Collet (8 mm) |
| 77057 | Collet Body SDG Series |
| 74070 | Collet Body (1 HP) |
| 74070KIT | Includes 74070, 74071, 74074 |



| Part Number | Description |
|-------------|------------------------|
| 74128 | Collet Nut |
| 74124 | Collet (3/32") |
| 74121 | Collet (1/8") |
| 74120 | Collet (1/4") |
| 74122 | Collet (3 mm) |
| 74123 | Collet (6 mm) |
| 77505 | Collet Body SAS Series |
| 74125 | Collet Body SDG Series |

Collets

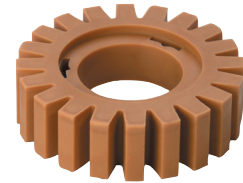


| Style | Capacity | Part Number | For Use On |
|------------|----------|-------------|------------|
| Sioux | 1/8" | 44522 | 2S1940 |
| | 3/16" | 44523 | |
| | 1/4" | 44440 | |
| | 3 mm | 66037 | |
| | 6 mm | 66038 | |
| 100 Series | 1/4" | 21126B | 1985 |
| | 3/8" | 21125 | |
| | 1/2" | 21124 | |

Belts and Erasers



Hub Set SPPT280-300



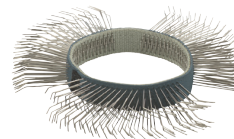
Eraser 68815



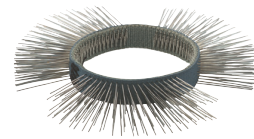
Course Wire Belt 68814



Fine Wire Belt 68813



Medium Stainless Steel Wire Belt 68917



Fine Stainless Steel Wire Belt 68915

| Part Number | Description |
|-------------|--|
| SPPT280-300 | 11mm Hub Set |
| 68815 | Rubber Eraser |
| 68814 | Course Wire Belt, 23 mm Wide |
| 68910 | Course Wire Belt, 11 mm Wide |
| 68911 | Medium Wire Belt, 23 mm Wide |
| 68912 | Medium Wire Belt, 11 mm Wide |
| 68813 | Fine Wire Belt, 23 mm Wide |
| 68913 | Fine Wire Belt, 11 mm Wide |
| 68916 | Medium Stainless Steel Wire Belt, 23 mm Wide |
| 68917 | Medium Stainless Steel Wire Belt, 11 mm Wide |
| 68914 | Fine Stainless Steel Wire Belt, 23 mm Wide |
| 68915 | Fine Stainless Steel Wire Belt, 11 mm Wide |

Diamond Blade



| Part Number | Description |
|-------------|--|
| 2311 | 4" Continuous-Rim Diamond Blade with 3/8" arbor hole |

Sioux Swivel

Allows the air hose to rotate 360° on 2 axes.



1338-25



1338FC-25

| Part Number | Description |
|-------------|---|
| 1338-25 | 1/4" non-regulated air swivel connector with safety pin |
| 1338-38 | 3/8" non-regulated air swivel connector with safety pin |
| 1338-50 | 1/2" non-regulated air swivel connector with safety pin |
| 1338FC-25 | 1/4" regulated air swivel connector with safety pin |